

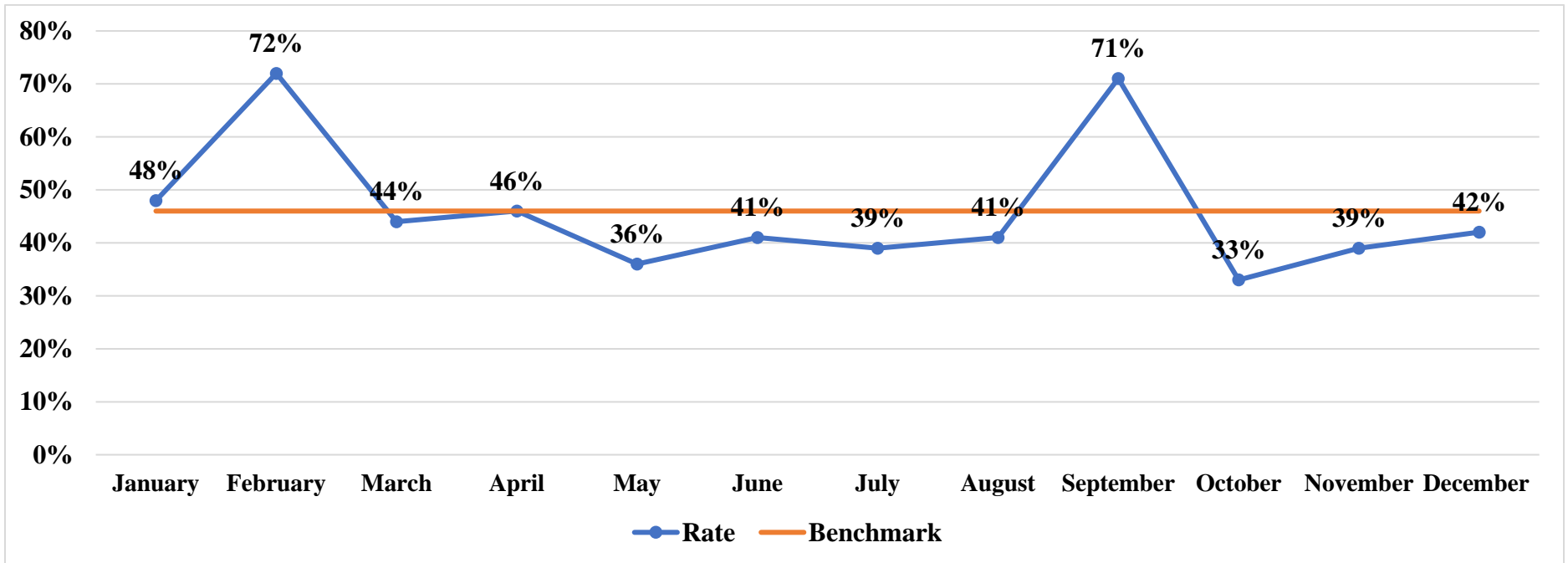


# Tuscarawas County Health Department Performance Indicators December 2023

## Administrative Services

Promotion and Community Engagement	Month	YTD	Benchmark	
Facebook Engagement Rate	42%	46%	46%	<b>MET</b>
Unique Visitors to TCHD's Website	3,677	30,509	3,917 per month / 47,000 per year	<b>NOT MET</b>

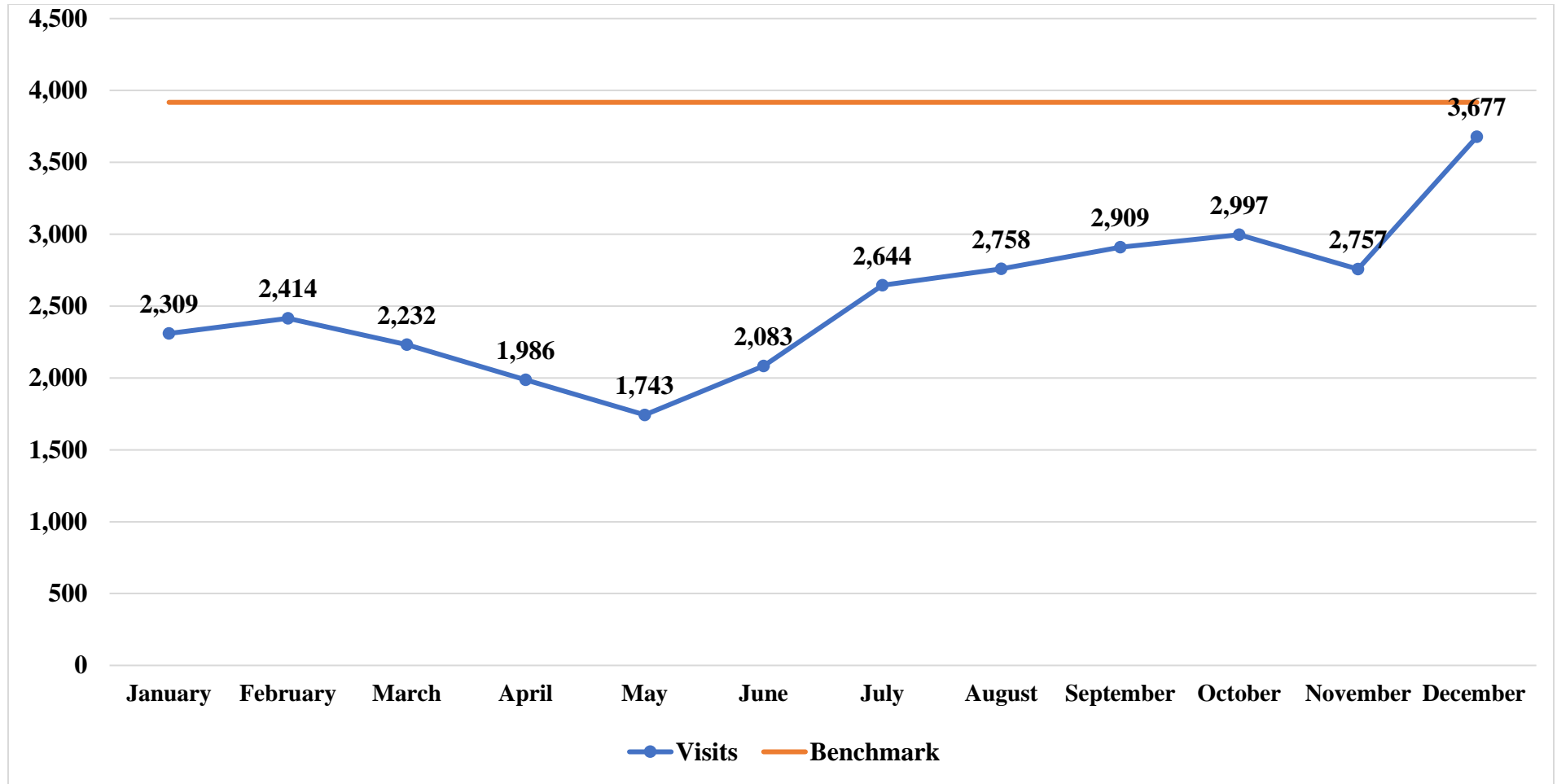
## Facebook Engagement Rate



Comments:

Month/Year: December 2023

## TCHD Website Page Visitors

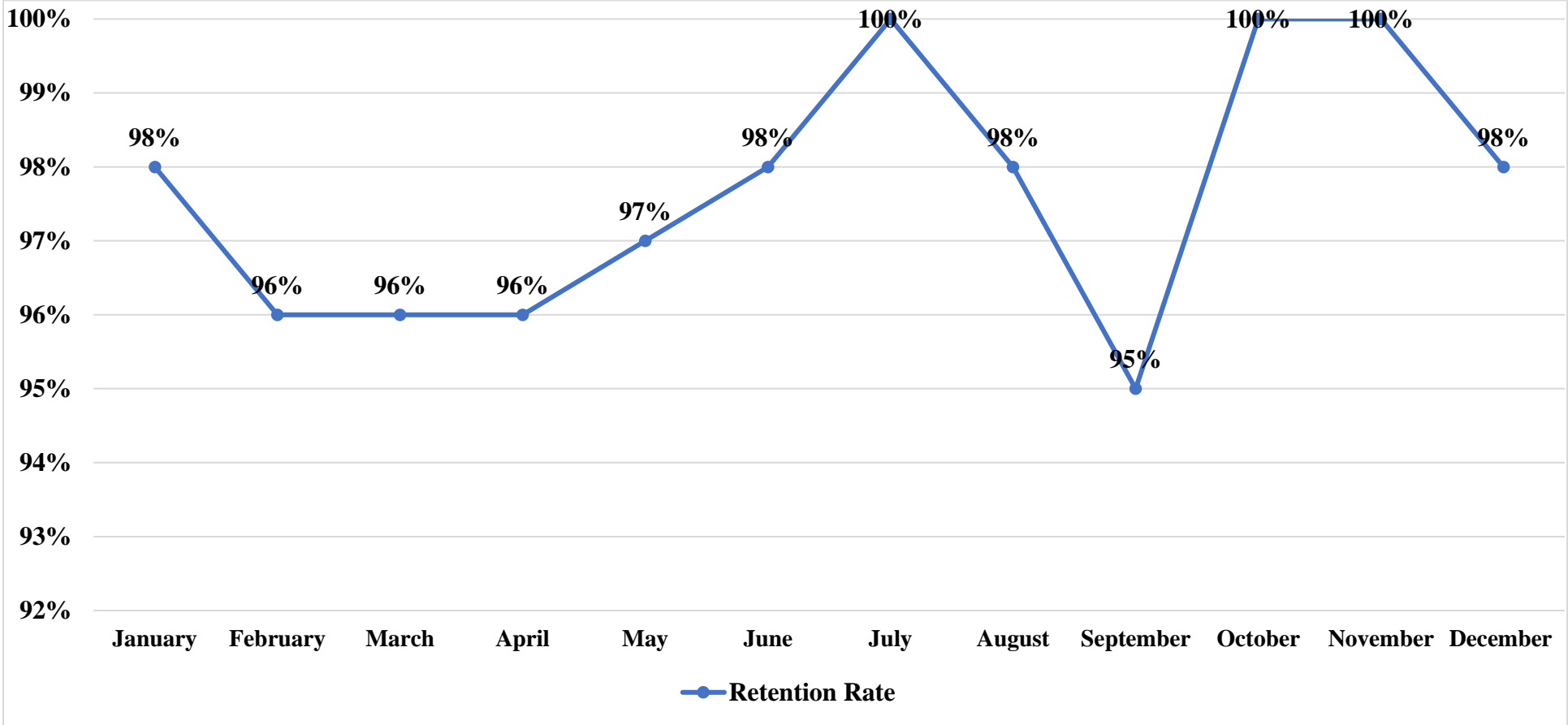


Comments:

Month/Year: December 2023

Human Resources	Month	YTD	Benchmark
Employee Retention Rate	98%	98%	N/A

**Employee Retention Rate**

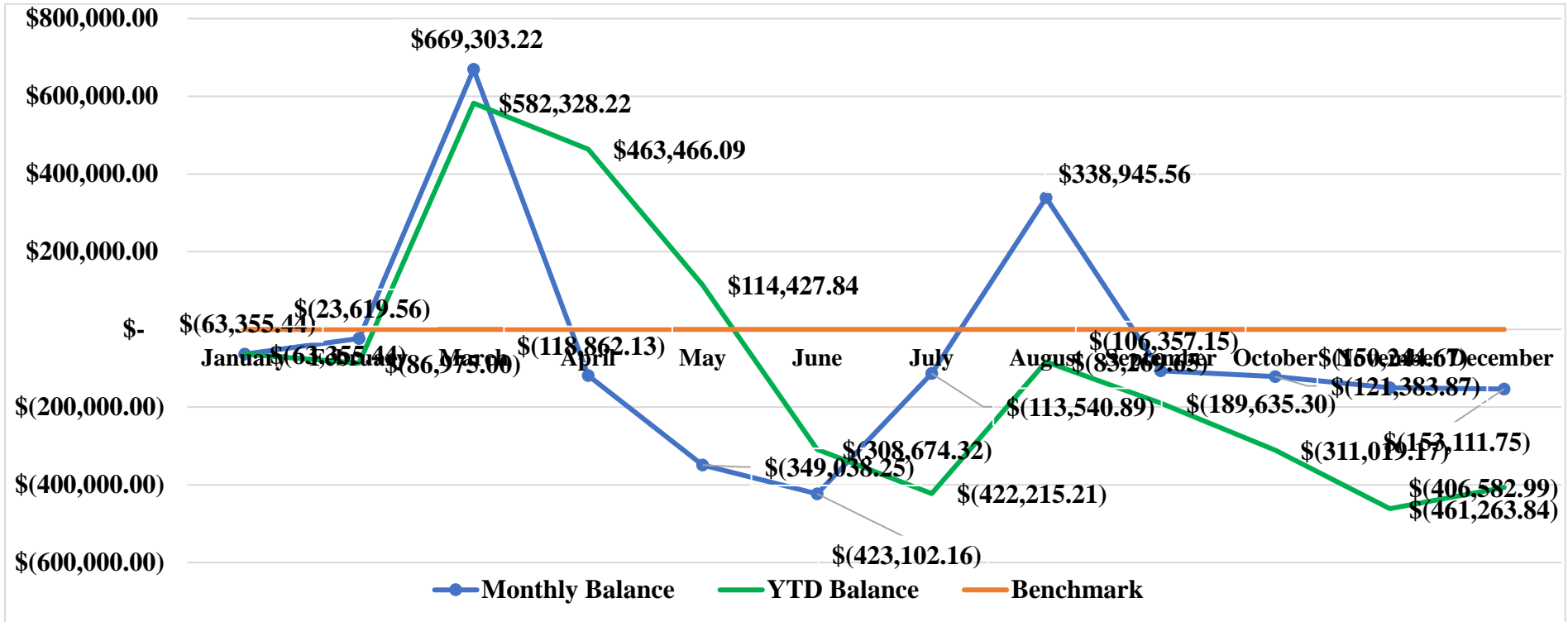


Comments:

Month/Year: December 2023

Finance	Month	YTD	Benchmark	
Combined fund balance	-\$153,111.75	-\$406,582.99	Balanced Budget	<b>NOT MET</b>

### Budget Balance



### Comments:

Month/Year: December 2023

## Environmental Health Services

<b>Food Safety Program</b>												
	Licenses/Permits Issued	YTD	Inspections Completed	YTD	Critical Violations	YTD	Plan Reviews	YTD	Complaint Investigations	YTD	Enforcement Actions	YTD
<b>Retail Food</b>	0	132	20	248	24	195	1	13	0	13	0	3
<b>Food Service</b>	0	282	72	631	81	579	1	21	6	39	0	0
<b>Temporary Food</b>	1	46	3	48	1	11	0	0	0	0	0	0
<b>Vending</b>	2	51	12	42	0	0	0	0	0	0	0	0
<b>Mobile</b>	1	50	1	61	0	13	0	13	0	2	0	0

<b>Water Safety Program (Well and Septic)</b>											
	Licenses/Permits Issued	YTD	Applications Approved	YTD	Final Inspections Completed	YTD	Complaint Investigations	YTD	Enforcement Actions	YTD	
<b>New Construction Home Sewage Treatment System (HSTS)</b>	1	78	5	83	4	69	0	0	0	0	
<b>Replacement Home Sewage Treatment System (HSTS)</b>	4	85	7	72	3	68	4	36	5	80	
<b>Private Water System</b>	14	151	14	151	7	105	0	0	0	0	

<b>Public Pool and Spa Program</b>										
	Licenses/Permits Issued	YTD	Inspections Completed	YTD	Critical Violations	YTD	Complaint Investigations	YTD	Enforcement Actions	YTD
<b>Pool and/or Spa</b>	0	28	12	134	0	3	0	0	0	0

Month/Year: December 2023

<b>Campground Program</b>										
	Licenses/Permits Issued	YTD	Inspections Completed	YTD	Critical Violations	YTD	Complaint Investigations	YTD	Enforcement Actions	YTD
<b>Campgrounds</b>	0	9	0	17	0	0	0	0	0	0

<b>Tattoo and Body Piercing Program</b>										
	Licenses/Permits Issued	YTD	Inspections Completed	YTD	Critical Violations	YTD	Complaint Investigations	YTD	Enforcement Actions	YTD
<b>Tattoo and/or Body Piercing</b>	3	16	1	14	0	0	0	1	0	0

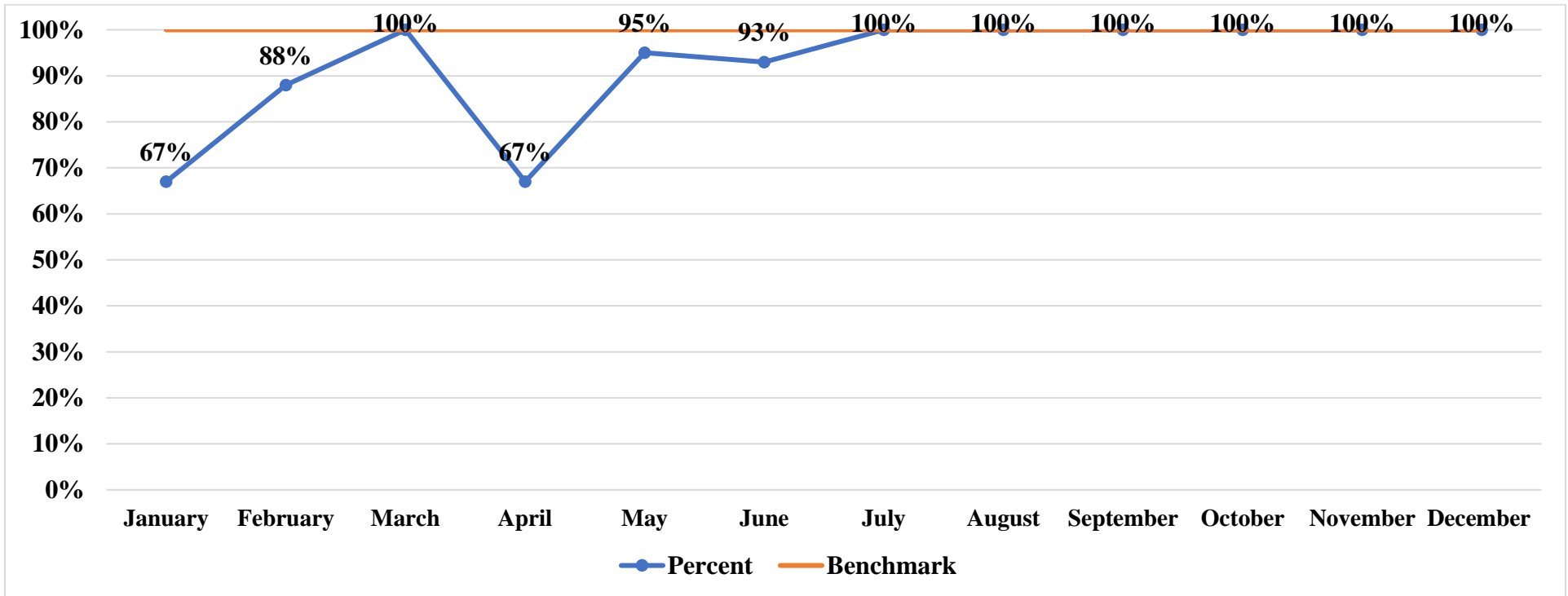
<b>Solid Waste Program</b>										
	Licenses/Permits Issued	YTD	Inspections Completed	YTD	Critical Violations	YTD	Complaint Investigations	YTD	Enforcement Actions	YTD
<b>Solid Waste Facilities</b>	0	12	8	249	0	0	4	37	1	11

<b>Animal Bite and Rabies Surveillance Program</b>			Month	YTD
<b>Animal Bites Investigated</b>			9	173
<b>Animal Specimens Sent for Testing</b>			4	17
<b>Animals Testing Positive for Rabies</b>			0	0
<b>Enforcement Actions</b>			8	119

Month/Year: December 2023

Nuisance Complaint Program	Month	YTD	Benchmark	
Nuisance Complaints Received	10	155		
% Investigated within 10 business days	100%	93%	100%	<b>NOT MET</b>

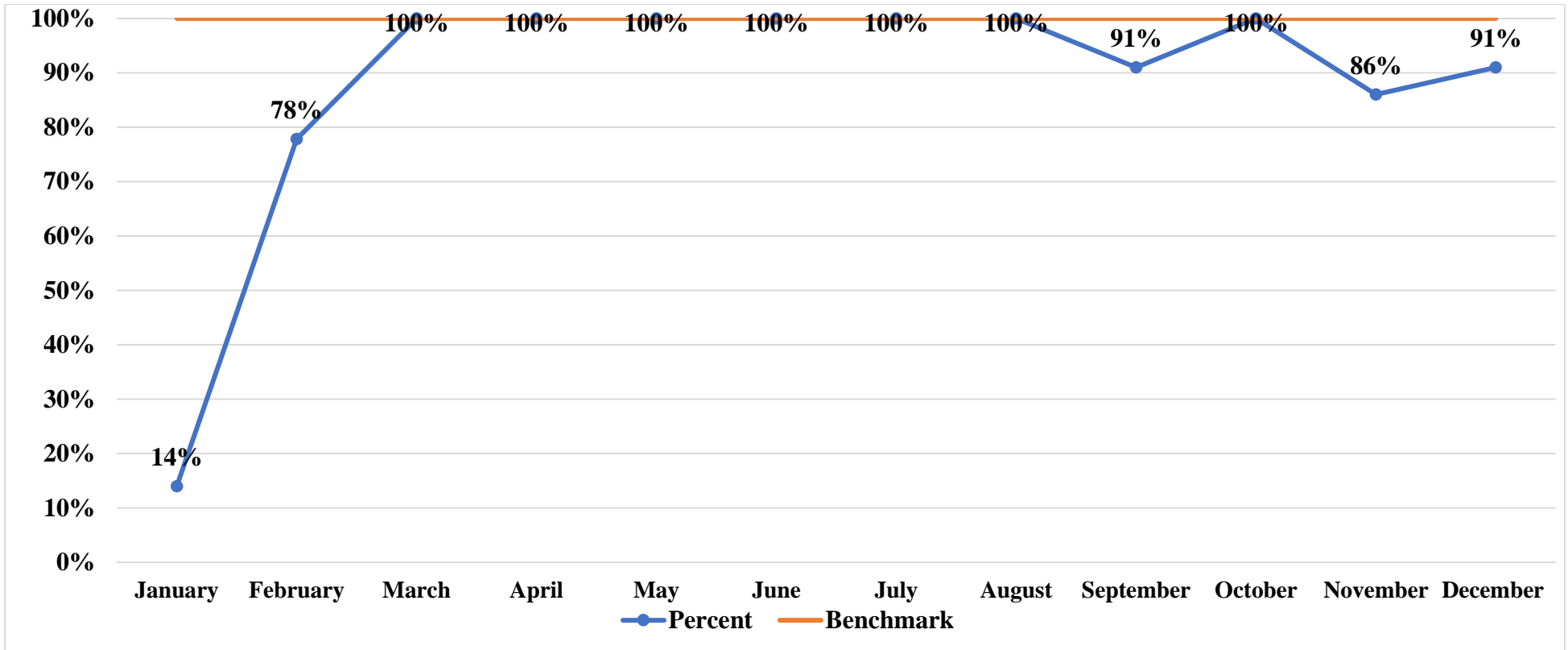
Nuisance Complaints Investigated within 10 Business Days



Comments:

Month/Year: December 2023

<b>Septic System Design Review</b>	Month	YTD	Benchmark	
<b>Designs Received</b>	11	155		
<b>% of designs reviewed and responded to within 10 business days</b>	91%	88%	100%	<b>NOT MET</b>



Comments:

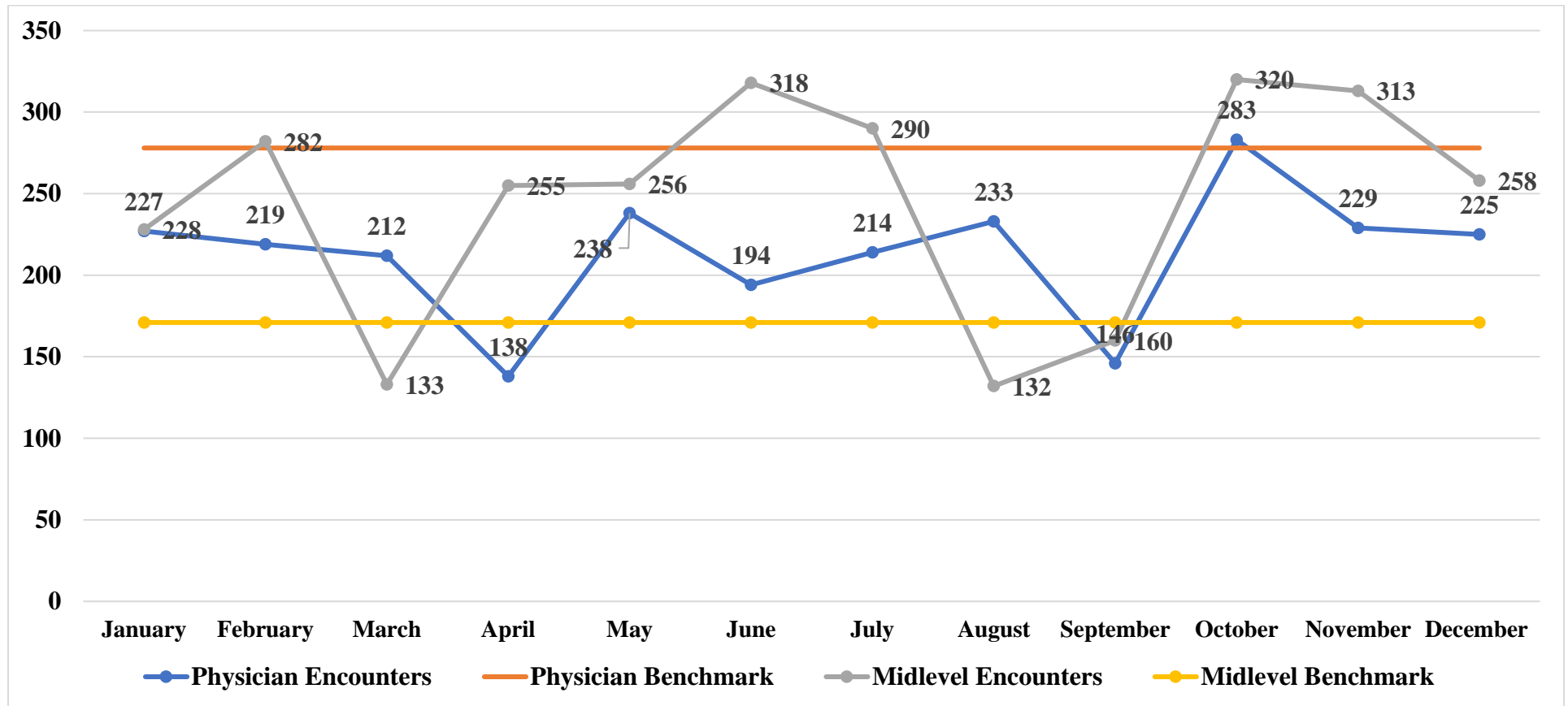
<b>Mosquito Control Program</b>	Month	YTD
<b>Mosquitos Collected for ODH Surveillance</b>	0	8,075
<b>West Nile Positive Pools Identified</b>	0	5

Month/Year: December 2023



## Community Health Services

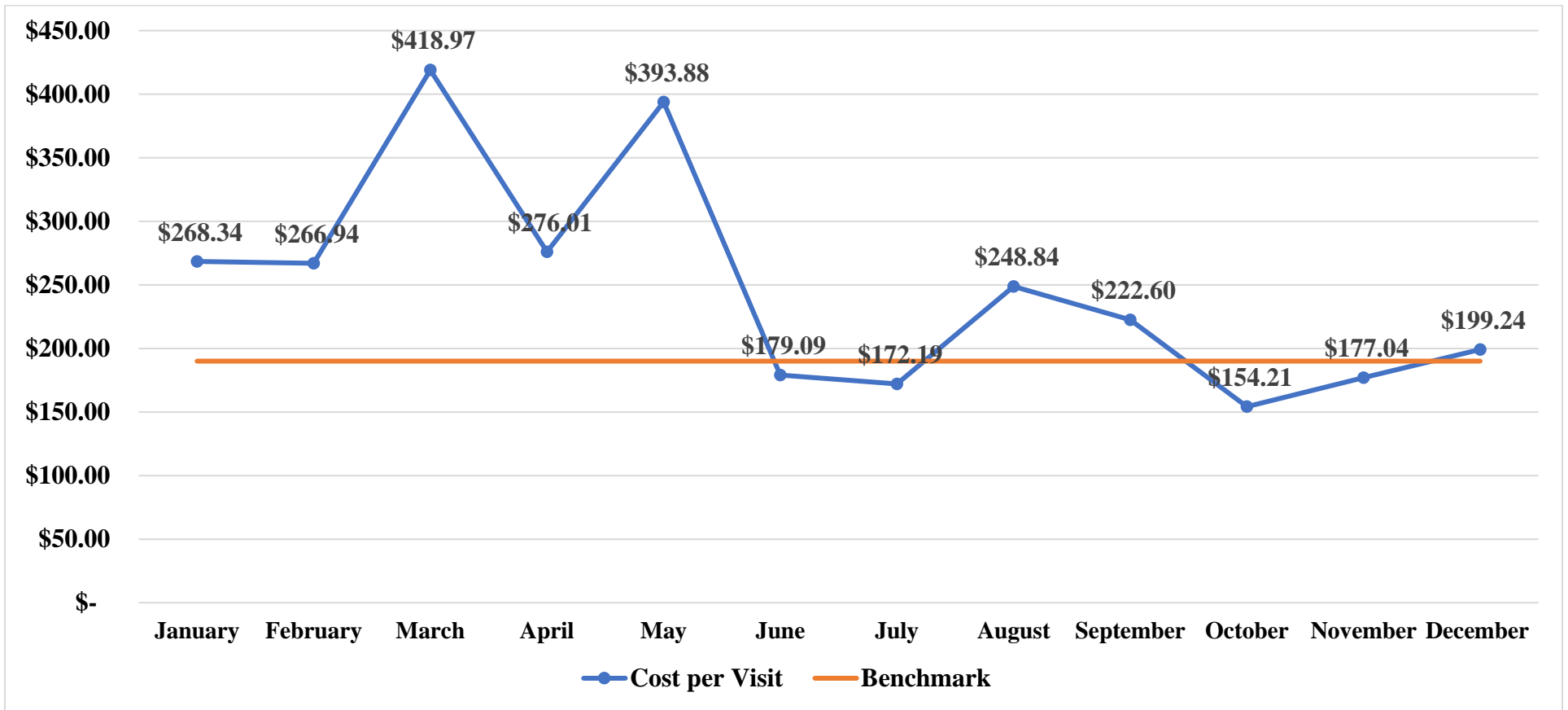
Rural Health Center	Month	YTD	Benchmark	
Encounters per Physician FTE	225	213	278 per month	<b>NOT MET</b>
Encounters per Midlevel FTE	258	245	214 per month	<b>MET</b>



Comments:

Month/Year: December 2023

Rural Health Clinic	Month	YTD	Benchmark	
Cost per Visit	\$199.24	\$248.11	\$190.00	<b>NOT MET</b>

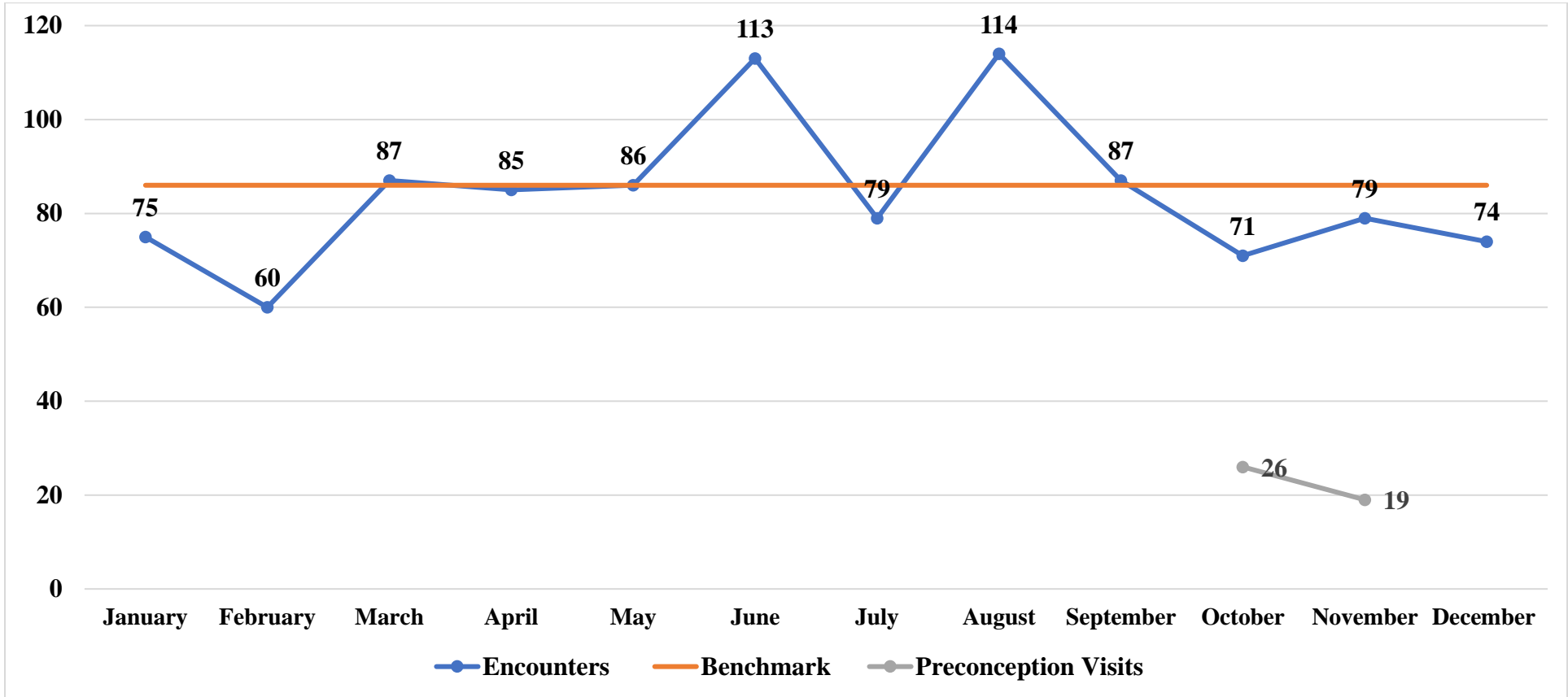


Comments:

Month/Year: December 2023

Reproductive Health and Wellness	Month	YTD	Benchmark	
Encounters	74 RHW; 6 preconception visits	1,010	86 per month / 1,025 annually	<b>NOT MET</b>

### Reproductive Health and Wellness Encounters

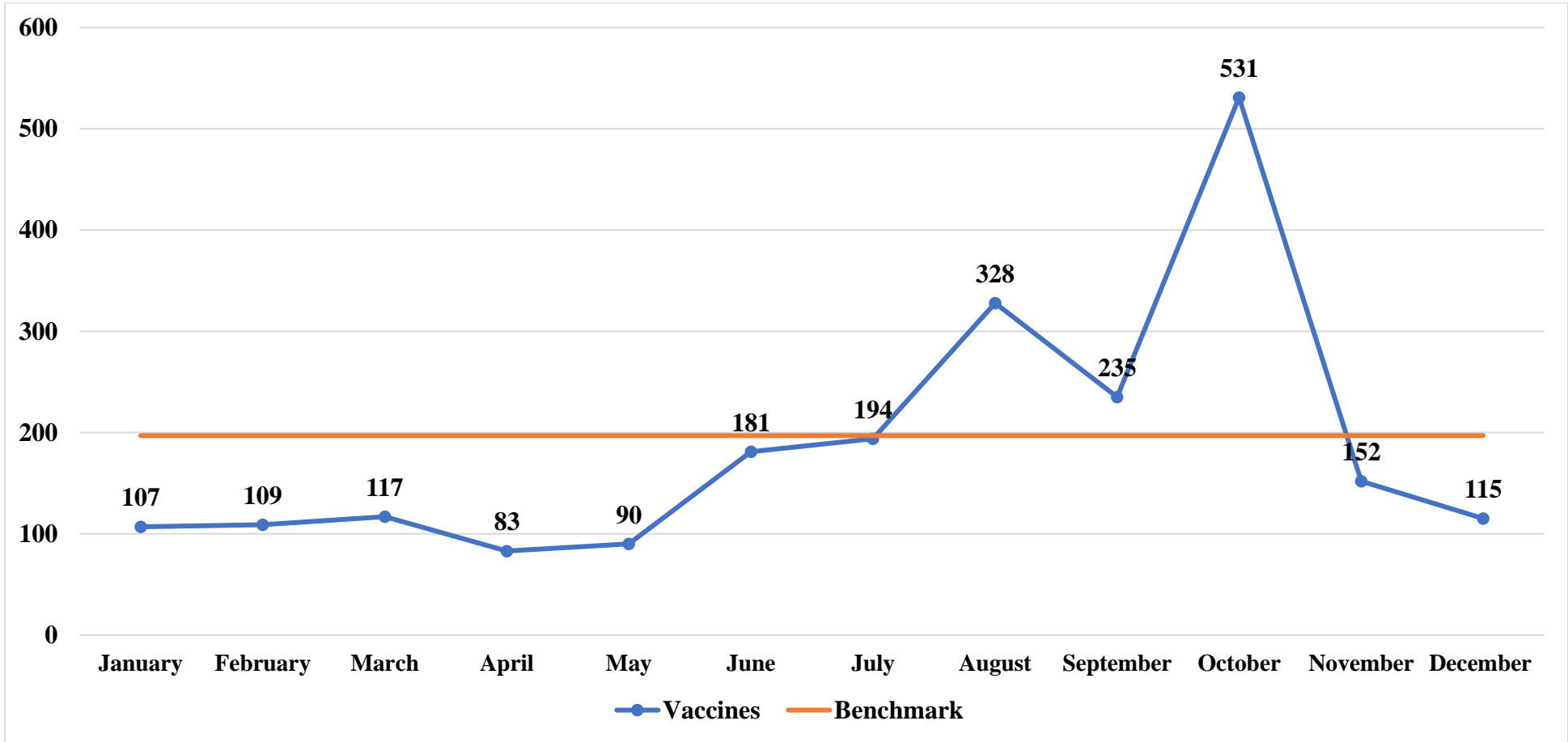


Comments:

Month/Year: December 2023

Immunizations	Month	YTD	Benchmark	
Immunizations Administered (excluding COVID-19)	115	2,242	197 per month/ 2,364 annually	<b>NOT MET</b>

### Immunizations Administered

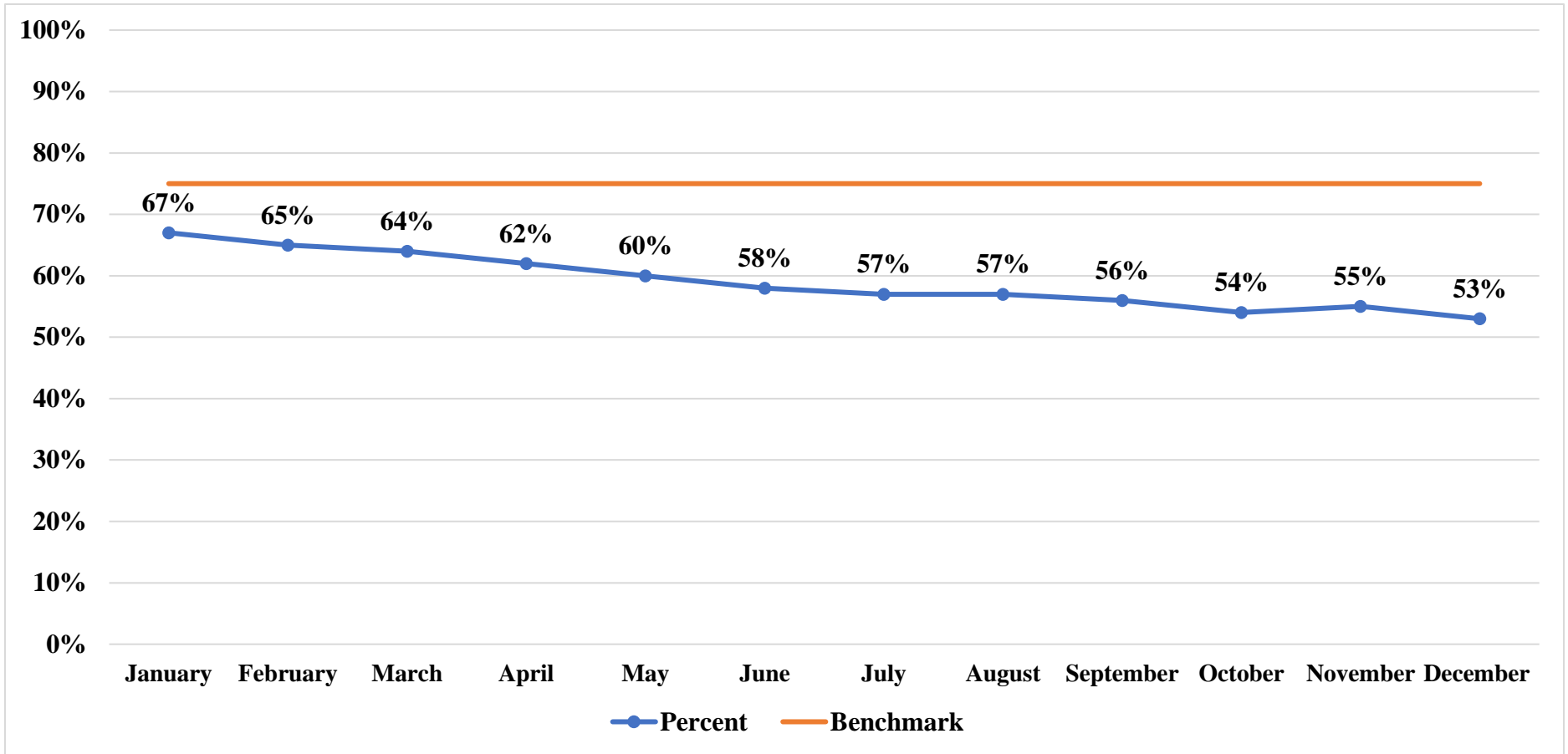


Comments:

Month/Year: December 2023

## Maternal and Child Health Services

WIC Program	Month	YTD	Benchmark	
Number of WIC infants who initiate breastfeeding at birth among WIC participants	53%	59%	75%	<b>NOT MET</b>

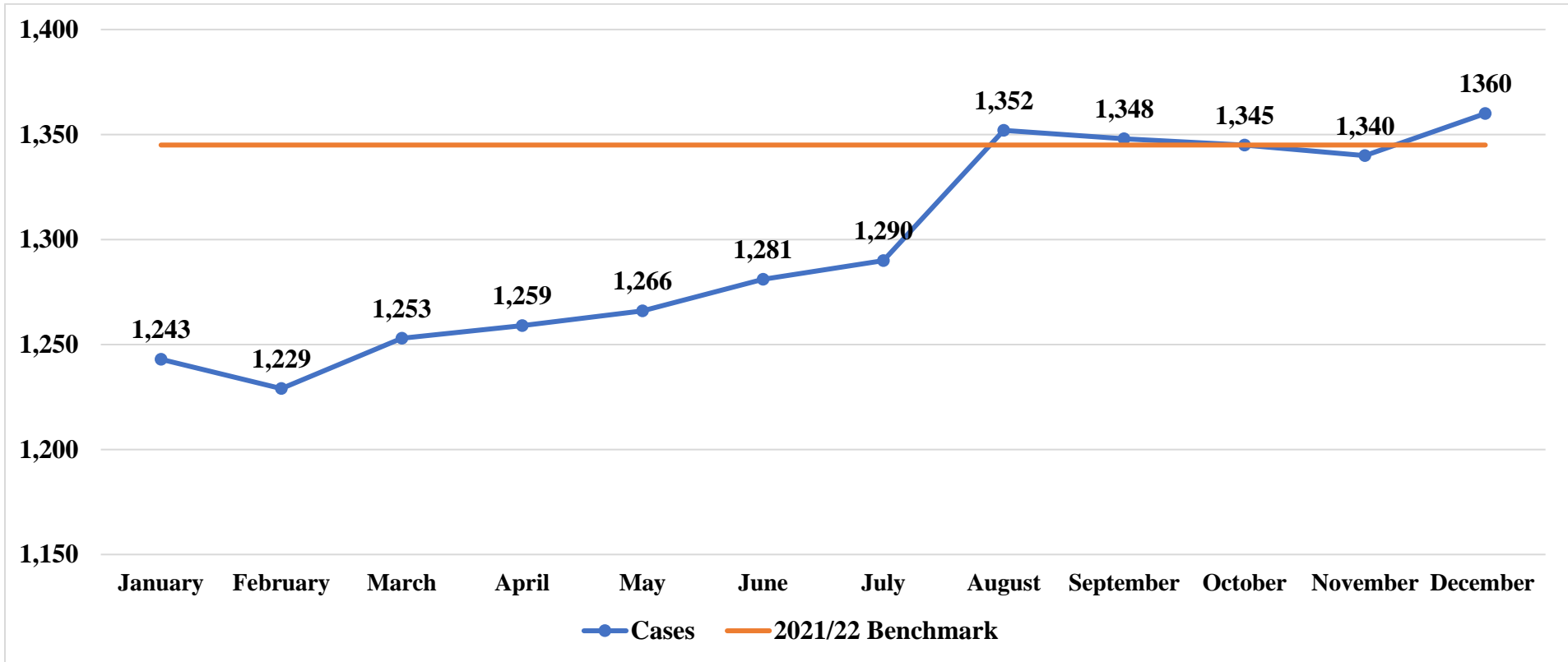


Comments:

Month/Year: December 2023

WIC Program	Month	YTD	Benchmark	
WIC Caseload	1,360	1,297	1,345 monthly	<b>NOT MET</b>

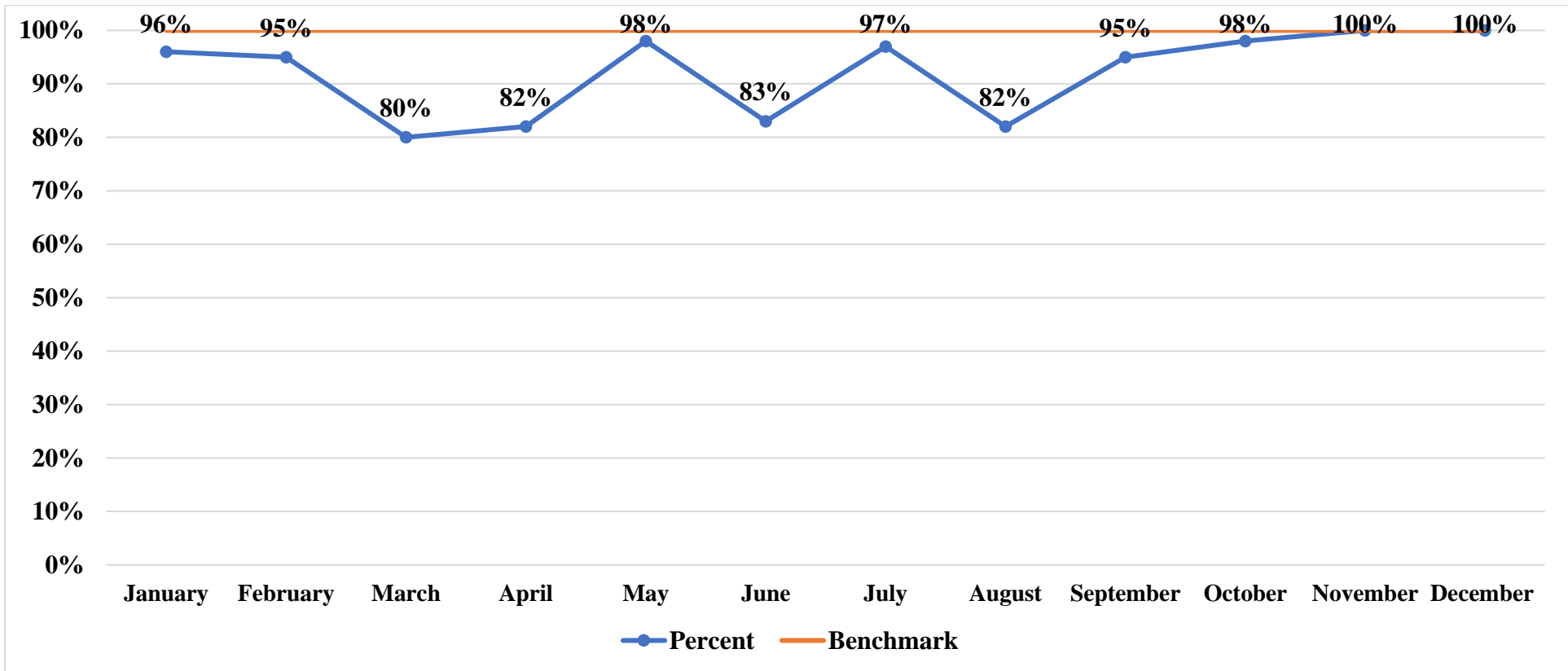
**WIC Caseload**



**Comments:**

Month/Year: December 2023

WIC Program	Month	YTD	Benchmark	
Number of clients who were provided education on the urgent maternal warning signs at least once during pregnancy and once during postpartum certification appointments	100%	92%	100%	<b>NOT MET</b>



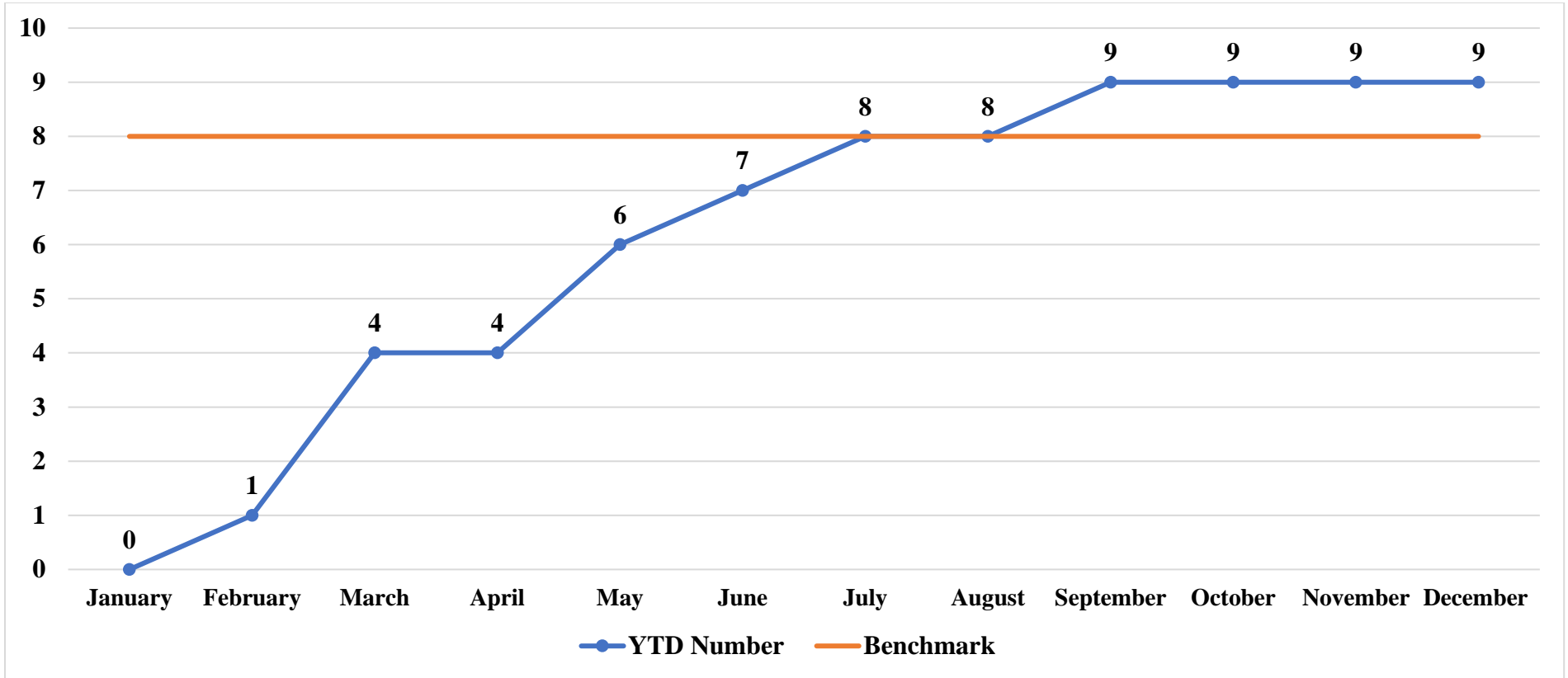
Comments:

Month/Year: December 2023

## Prevention Services

Funding	Month	YTD	Benchmark	
Number of New RFPs Completed	0	9	8 annually	<b>MET</b>

### New Proposals Completed



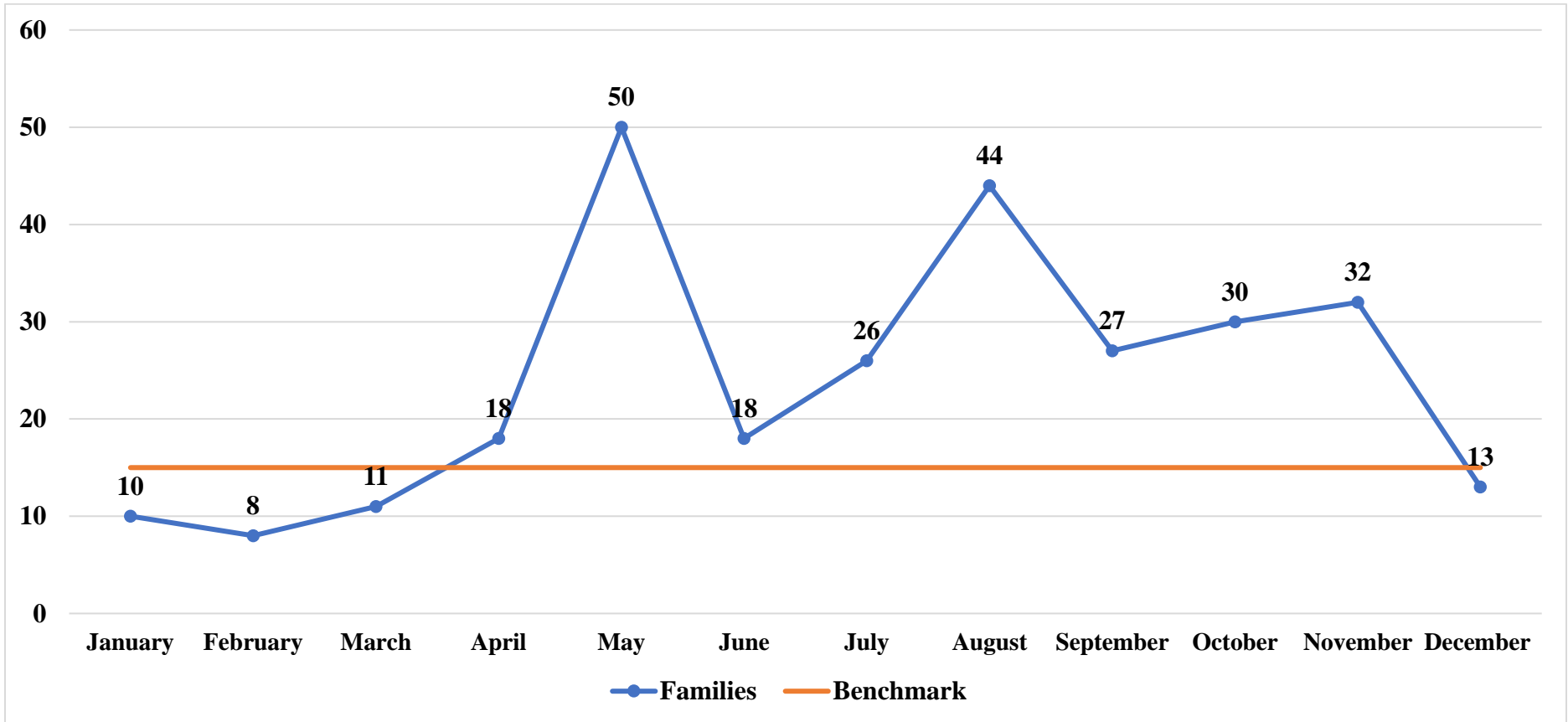
Comments:

Month/Year: December 2023



Injury Prevention	Month	YTD	Benchmark	
Number of Families Served	13	287	15 per month/ 172 annually	<b>MET</b>

**Families Served**

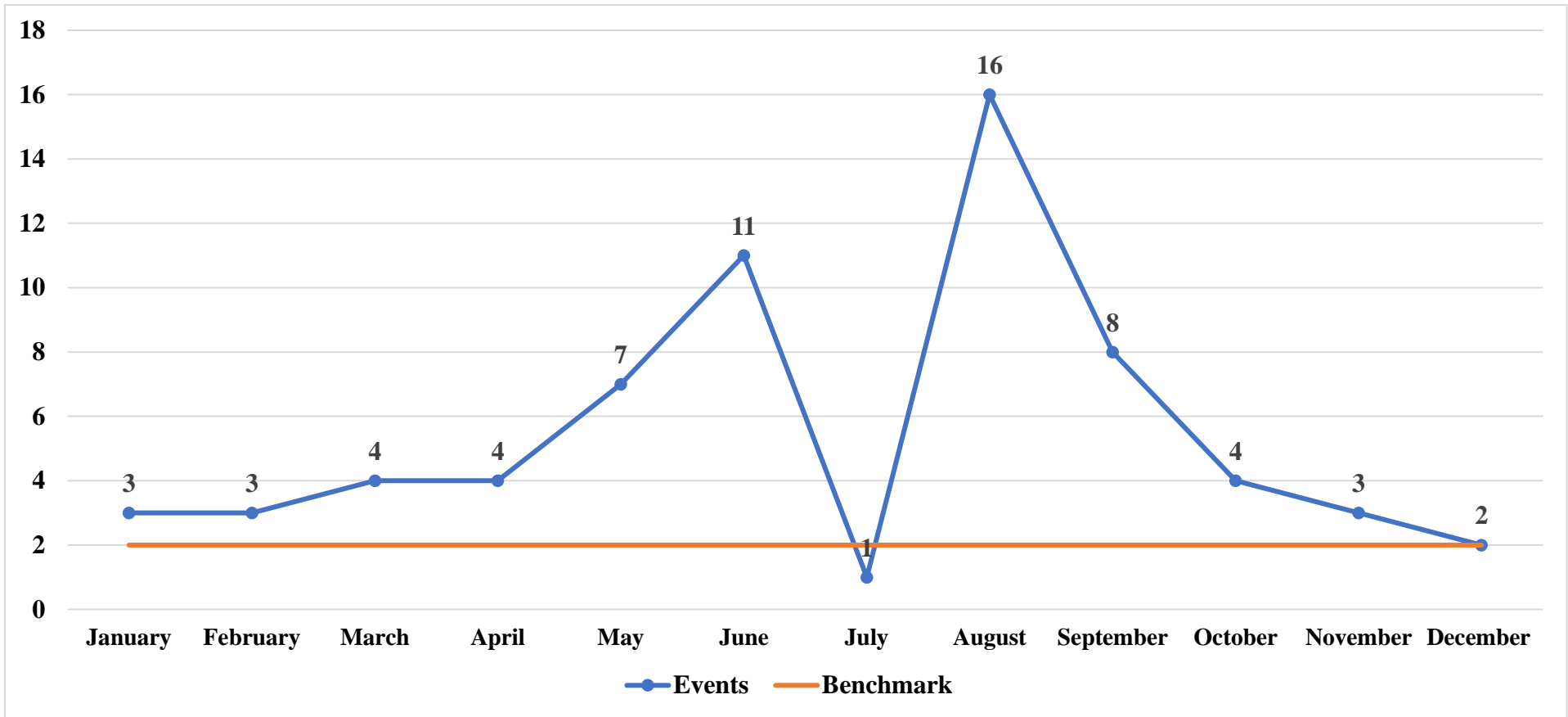


**Comments:**

Month/Year: December 2023

<b>Community Engagement</b>	Month	YTD	Benchmark	
<b>Participation at Community Events</b>	2	66	2 per month/ or at least 18 annually	<b>MET</b>

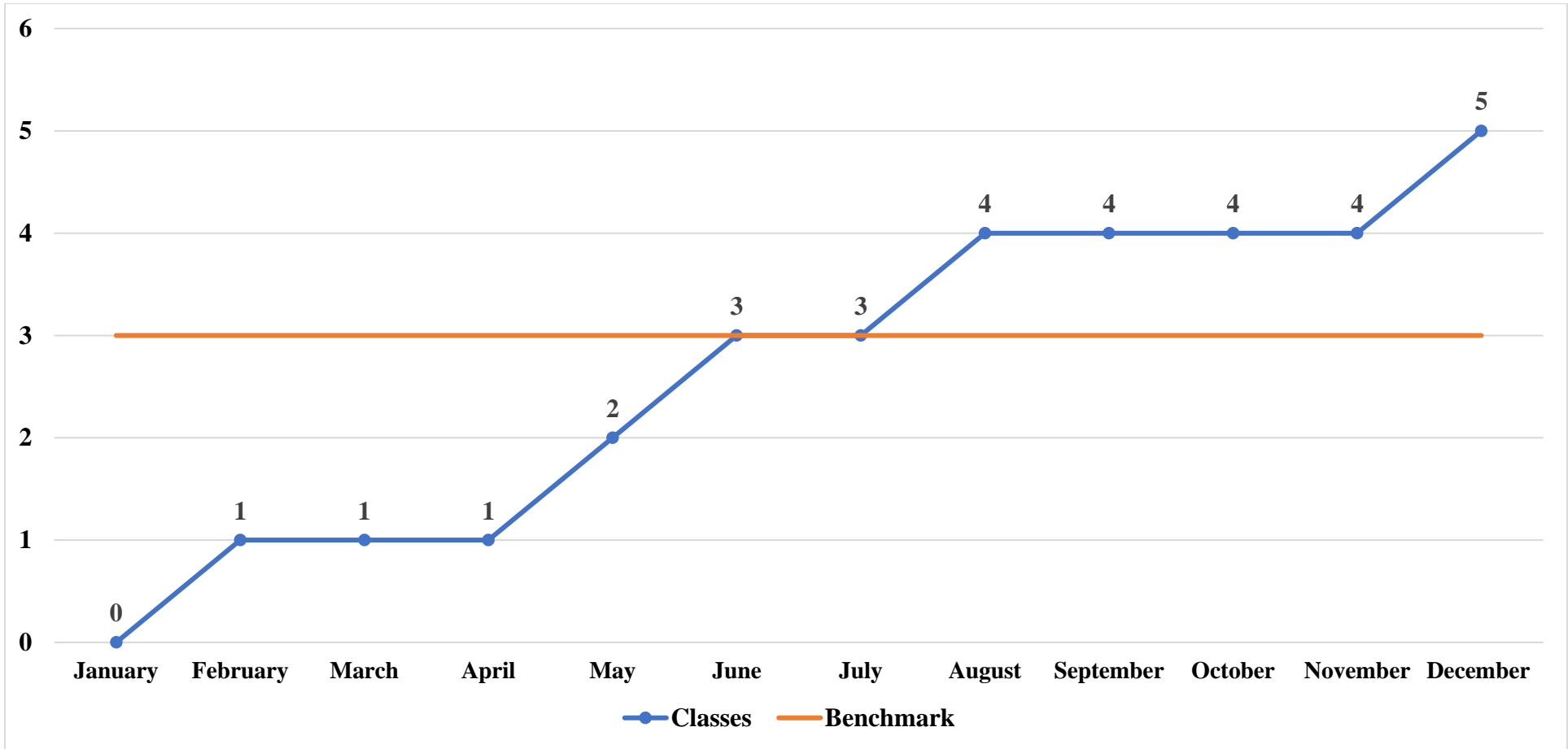
**Community Events**



**Comments:**

Month/Year: December 2023

Prevention Services	Month	YTD	Benchmark	
Number of Car Seat Safety classes held at community partner locations	1	5	3 per year	<b>MET</b>



Comments:

Month/Year: December 2023