

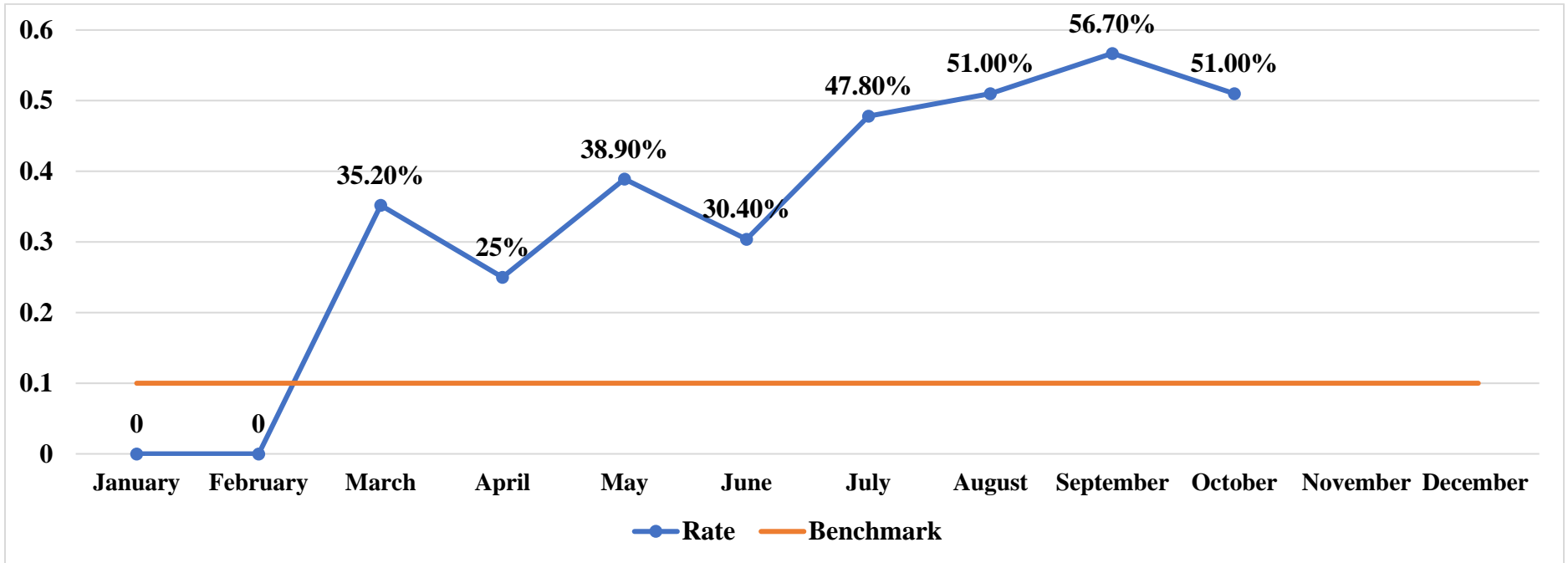


# Tuscarawas County Health Department Monthly Benchmark Tracking Form October 2022

## Administrative Services

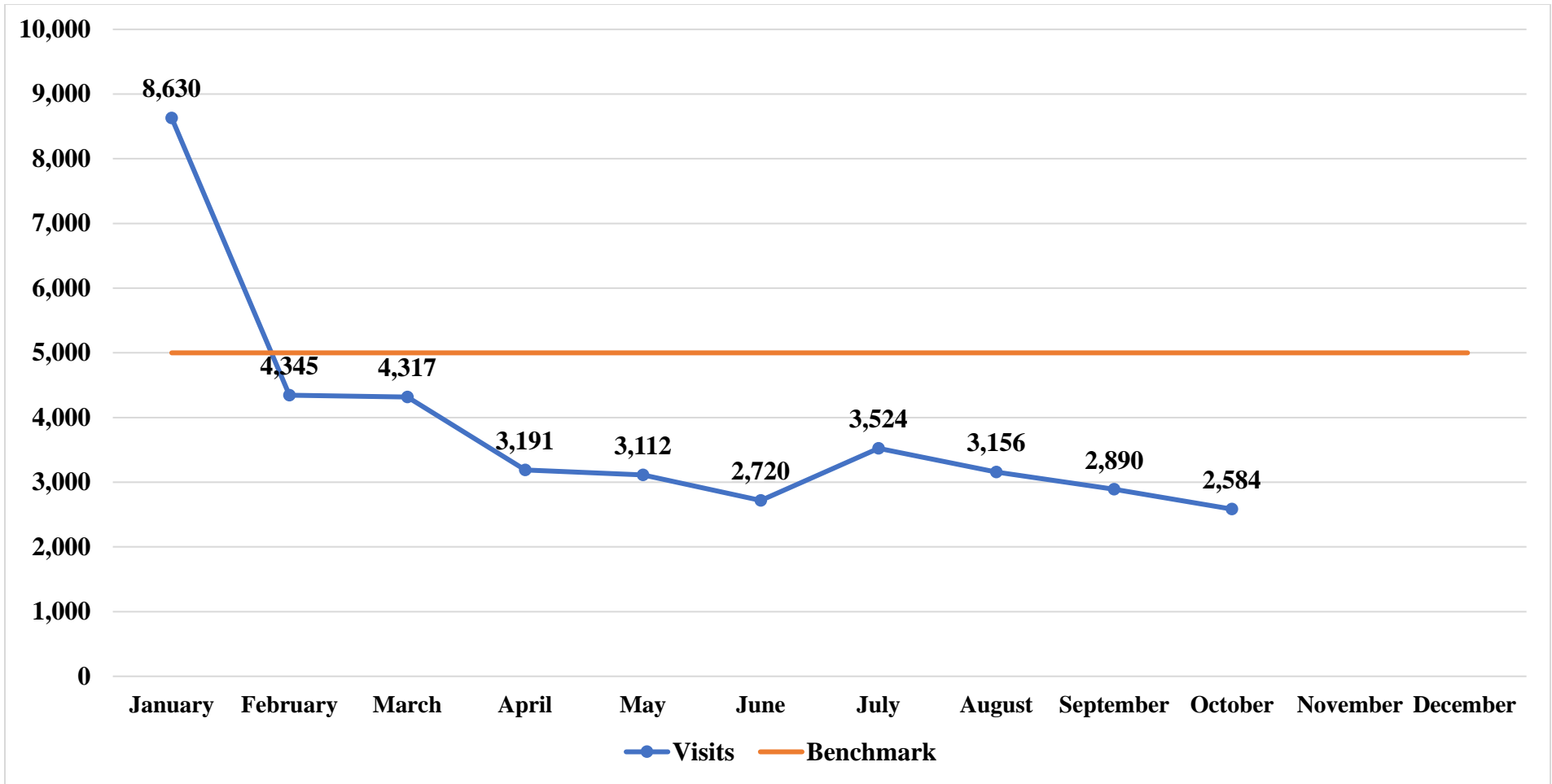
Promotion and Community Engagement	Month	YTD	Benchmark
Facebook Engagement Rate	51.0%	42.0%	10%
Unique Visitors to TCHD's Website	2,584	38,469	5,000 month per year/ 60,000 per year

## Facebook Engagement Rate



Month/Year: October 2022

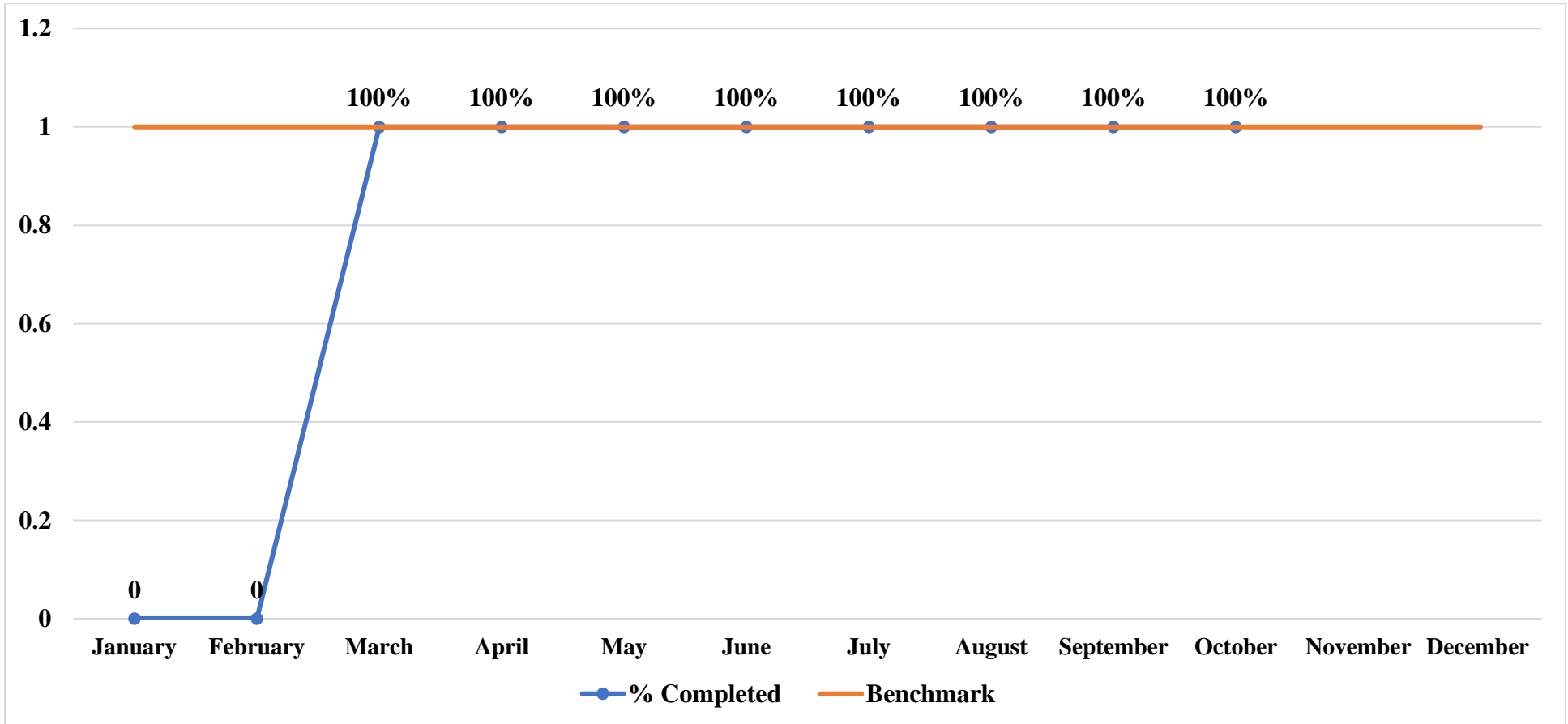
# TCHD Website Page Visitors



Month/Year: October 2022

Human Resources	Month	YTD	Benchmark
Number of new staff	1	13	N/A
Percent of new staff who have completed their new staff training requirements in 180 days	100%	100%	100%

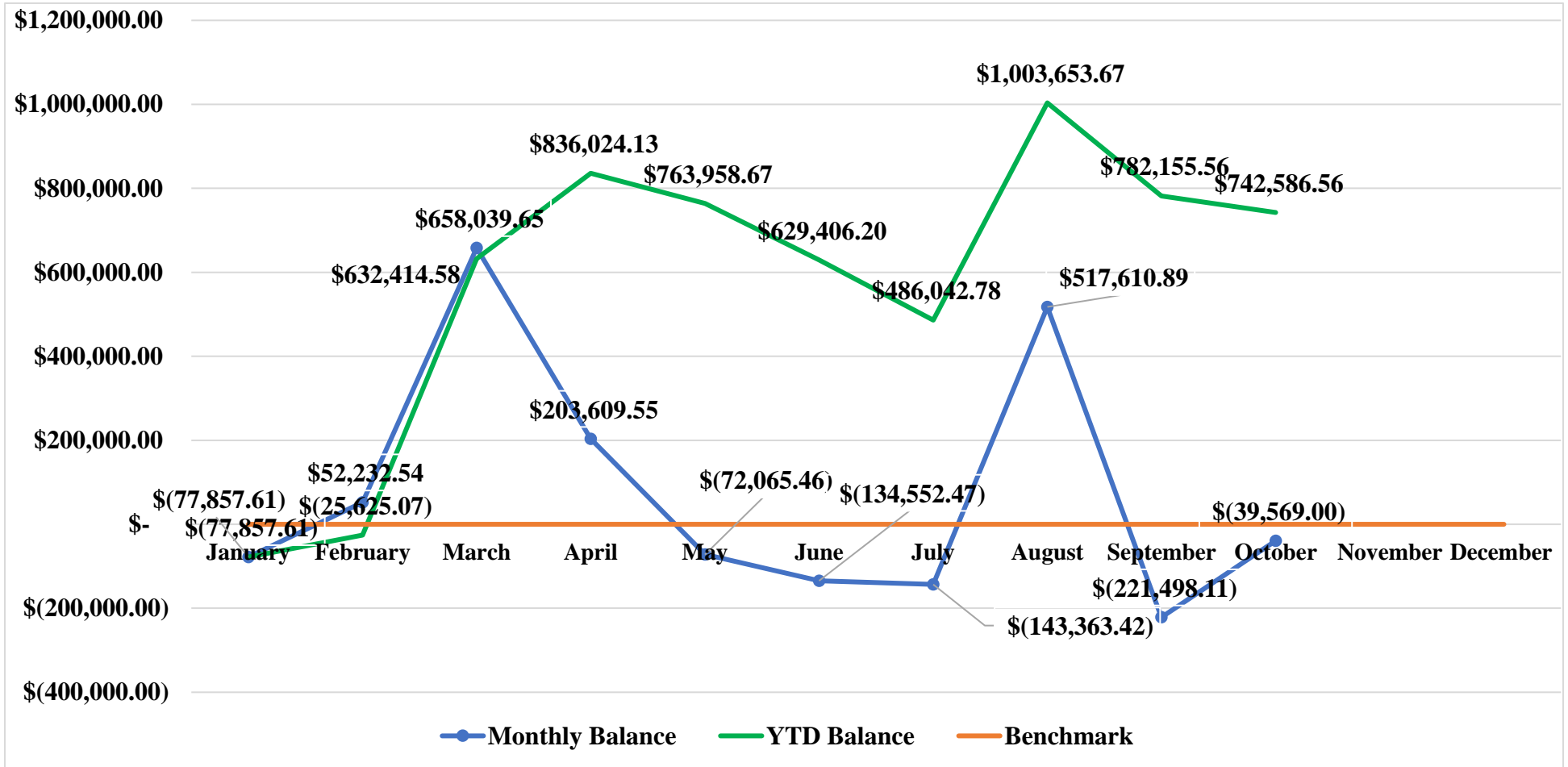
### New Staff Training Completed



Month/Year: October 2022

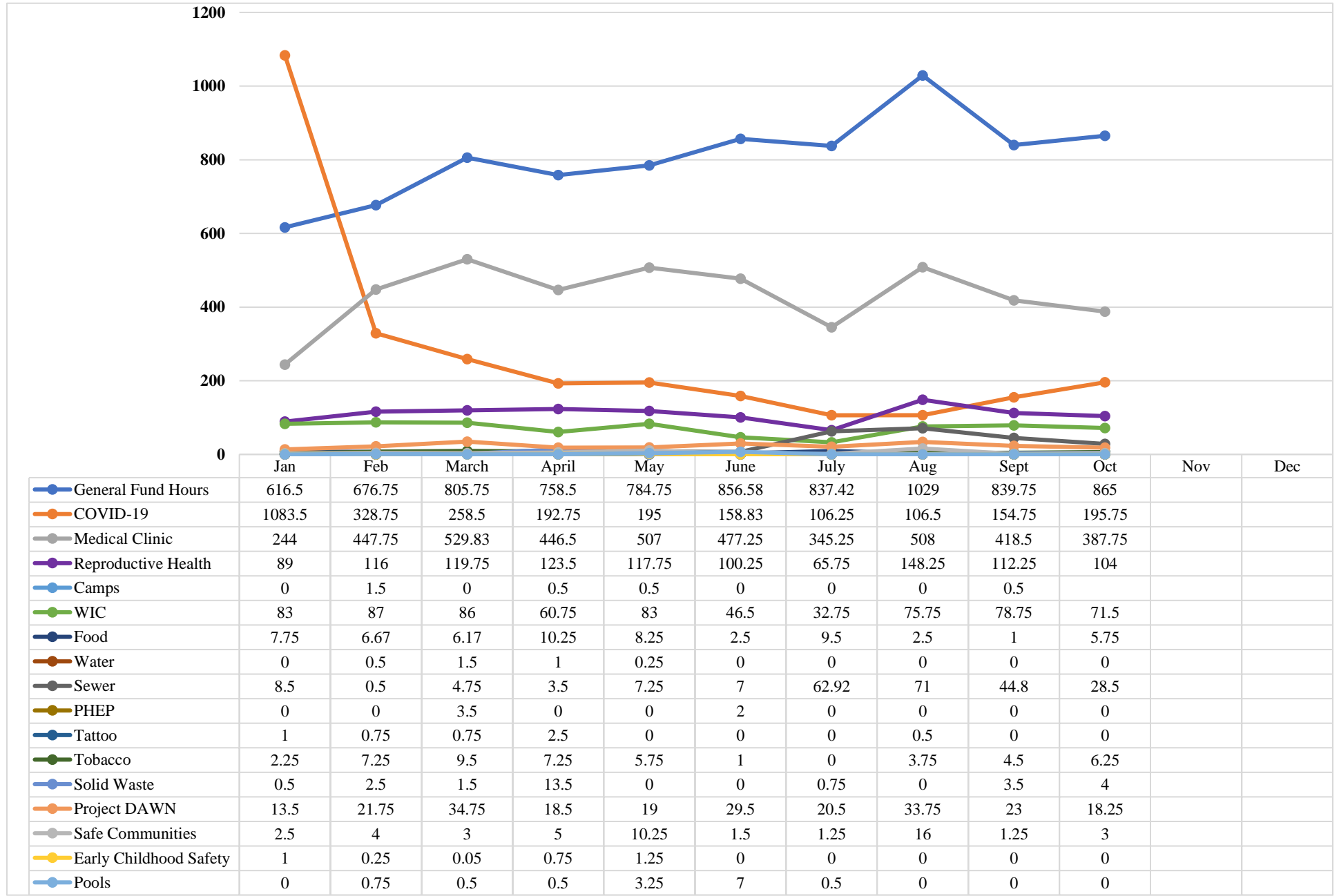
Finance	Month	YTD	Benchmark
Combined fund balance	-\$39,569.00	\$742,586.56	Balanced Budget

### Budget Balance



Month/Year: October 2022

## Bureau of Administrative Services Staff Time



Month/Year: October 2022

## Environment Health Services

<b>Food Safety Program</b>												
	Licenses/Permits Issued	YTD	Inspections Completed	YTD	Critical Violations	YTD	Plan Reviews	YTD	Complaint Investigations	YTD	Enforcement Actions	YTD
<b>Retail Food</b>	1	127	23	190	26	227	0	7	0	7	0	2
<b>Food Service</b>	0	281	39	430	36	400	0	17	2	35	0	5
<b>Temporary Food</b>	1	39	1	33	0	9	0	0	0	1	0	0
<b>Vending</b>	0	50	5	44	0	1	0	0	0	0	0	0
<b>Mobile</b>	0	46	0	42	0	7	0	15	0	0	0	0

<b>Water Safety Program (Well and Septic)</b>											
	Licenses/Permits Issued	YTD	Applications Approved	YTD	Final Inspections Completed	YTD	Complaint Investigations	YTD	Enforcement Actions	YTD	
<b>New Construction Home Sewage Treatment System (HSTS)</b>	10	63	8	62	16	51	0	0	0	0	
<b>Replacement Home Sewage Treatment System (HSTS)</b>	13	70	6	57	12	69	0	15	0	1	
<b>Private Water System</b>	9	85	9	85	6	19	0	0	0	0	

<b>Public Pool and Spa Program</b>										
	Licenses/Permits Issued	YTD	Inspections Completed	YTD	Critical Violations	YTD	Complaint Investigations	YTD	Enforcement Actions	YTD
<b>Pool and/or Spa</b>	0	28	2	75	0	26	0	0	0	1

Month/Year: October 2022

**Campground Program**

	Licenses/Permits Issued	YTD	Inspections Completed	YTD	Critical Violations	YTD	Complaint Investigations	YTD	Enforcement Actions	YTD
<b>Campgrounds</b>	0	11	1	14	0	0	0	1	0	0

**Tattoo and Body Piercing Program**

	Licenses/Permits Issued	YTD	Inspections Completed	YTD	Critical Violations	YTD	Complaint Investigations	YTD	Enforcement Actions	YTD
<b>Tattoo and/or Body Piercing</b>	0	8	0	13	0	0	0	1	0	4

**Solid Waste Program**

	Licenses/Permits Issued	YTD	Inspections Completed	YTD	Critical Violations	YTD	Complaint Investigations	YTD	Enforcement Actions	YTD
<b>Solid Waste Facilities</b>	0	2	7	106	0	0	2	21	0	3

**Animal Bite and Rabies Surveillance Program**

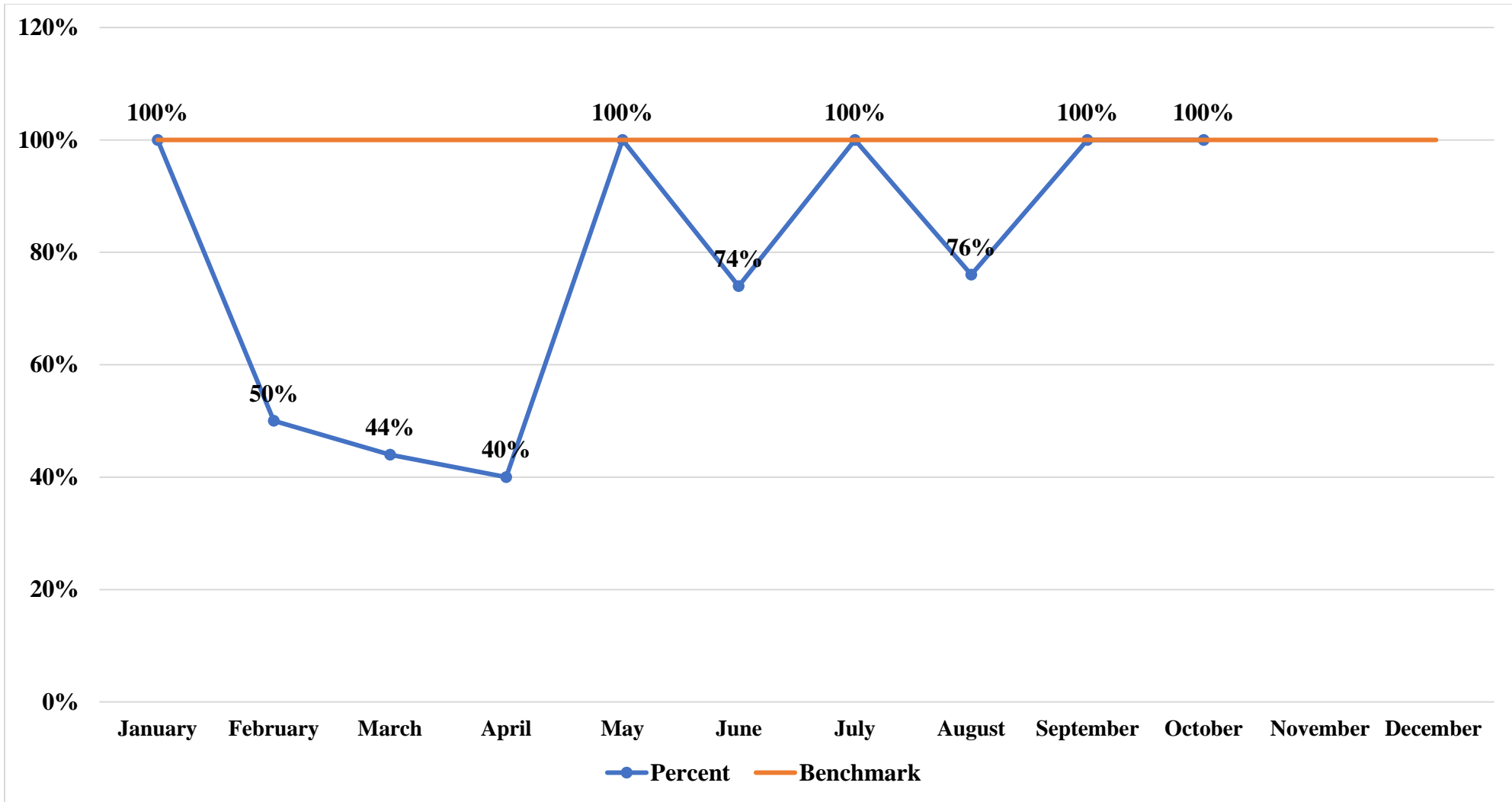
	Month	YTD
<b>Animal Bites Investigated</b>	16	146
<b>Animal Specimens Sent for Testing</b>	1	26
<b>Animals Testing Positive for Rabies</b>	0	0
<b>Enforcement Actions</b>	0	0

**Nuisance Complaint Program**

	Month	YTD
<b>Nuisance Complaints Received</b>	6	105
<b>% Investigated within 10 business days</b>	100%	78.4%

Month/Year: October 2022

**Nuisance Complaints Investigated within 10 Business Days**

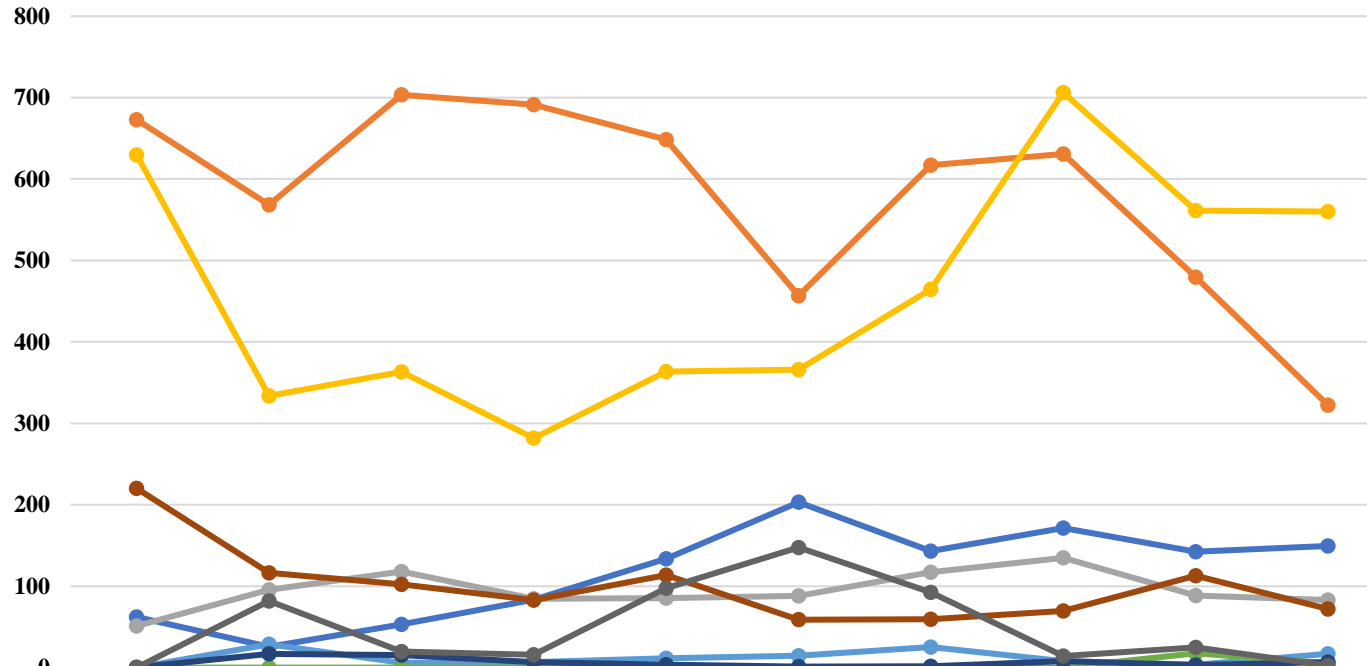


Mosquito Control Program	Month	YTD
Mosquitos Collected for ODH Surveillance	0	4,402
West Nile Positive Pools Identified	0	3

Month/Year: October 2022



## Environmental Health Services Staff Time



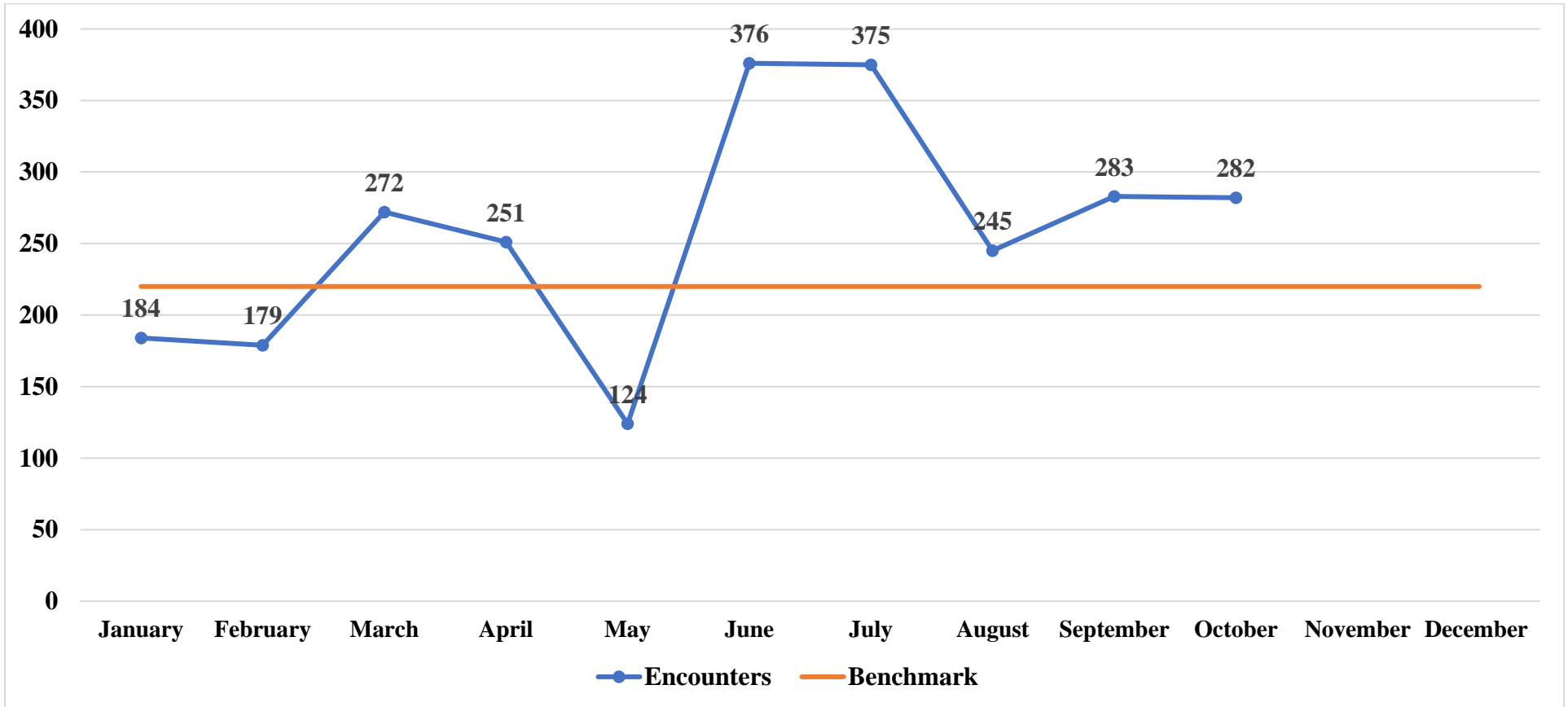
	Jan	Feb	March	April	May	June	July	Aug	Sept	Oct	Nov	Dec
General Fund Hours	62	25.5	53	83.5	133.5	203	143.25	171.25	142.25	149.25		
Food	673	568.18	703.5	691.25	648.5	456.75	617	630.75	479.5	322.25		
Water	51	95.5	117.75	84.5	85.25	88	117.25	134.75	88.5	82.75		
Sewer	629.75	333.5	363.25	281.75	363.75	365.75	464.75	706.25	561.25	560.25		
Camps	0	28.5	5.75	6.5	11.25	14.5	25.25	7.75	3.5	17		
PHEP	0	0	0	0	0	0	0	0	17.5	5		
Tattoo	0.25	16.75	15.5	6.75	3.5	1.25	1.5	7.75	3	6.75		
Solid Waste	220	116.25	102.25	82.75	113.5	58.75	59.25	69.5	112.75	71.75		
Pools	0	81.75	19.5	15.75	97.5	147.5	92.25	14.25	24.75	2.5		

Month/Year: October 2022

## Community Health Services

Rural Health Center	Month	YTD	Benchmark
Encounters per Provider FTE	283	2,572	220 per month

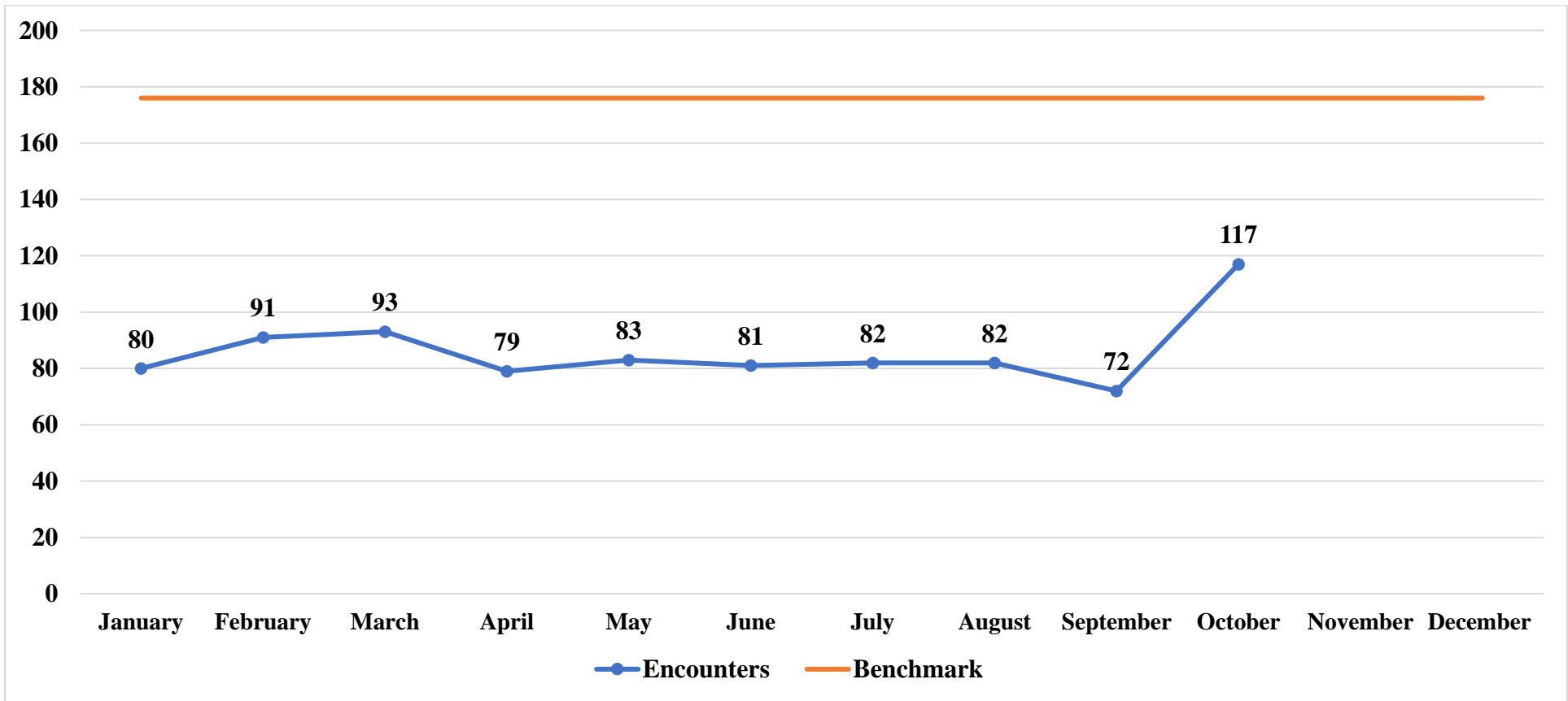
### Health Center Encounters per FTE



Month/Year: October 2022

Reproductive Health and Wellness	Month	YTD	Benchmark
Encounters	117	861	176 per month / 2,112 annually

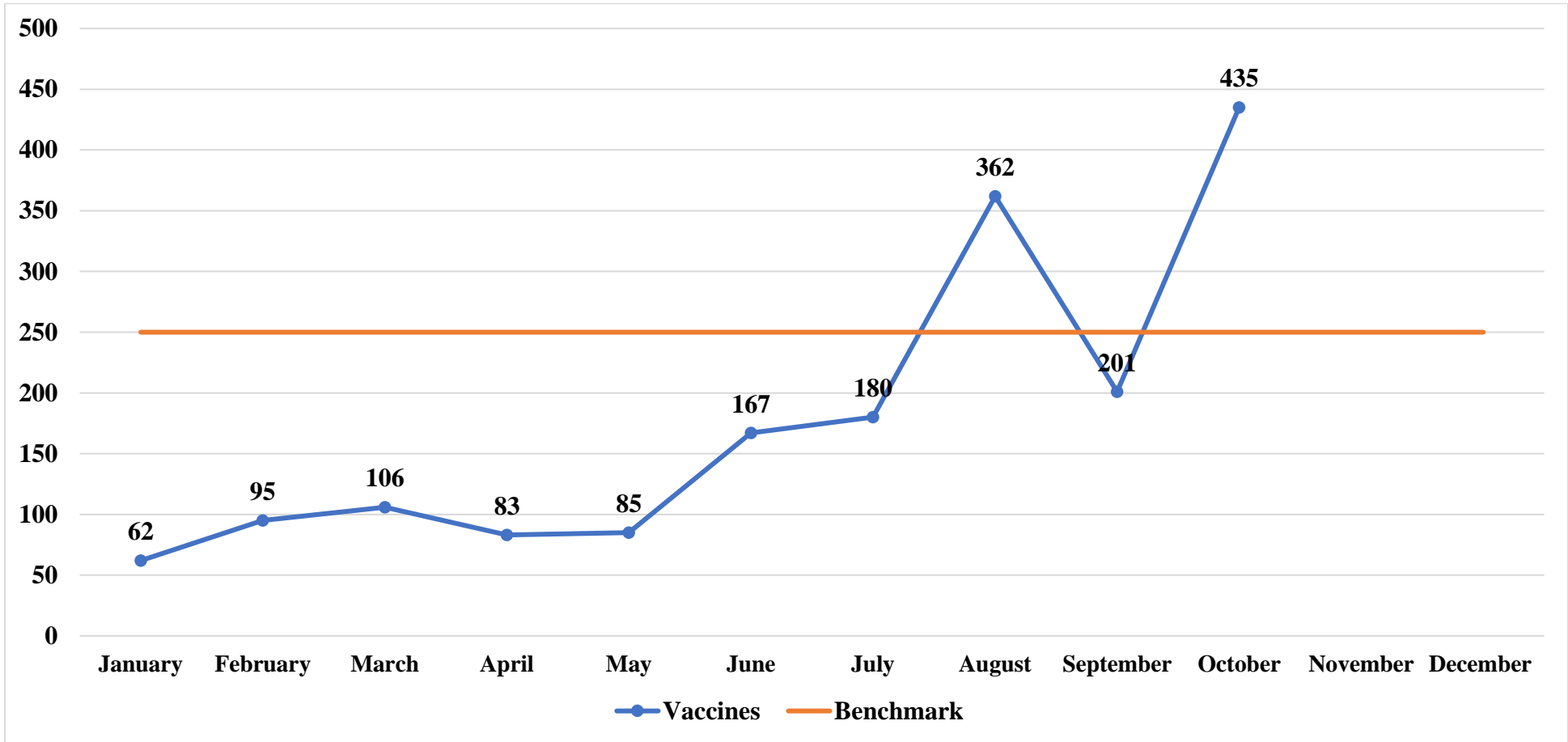
### Reproductive Health and Wellness Encounters



Month/Year: October 2022

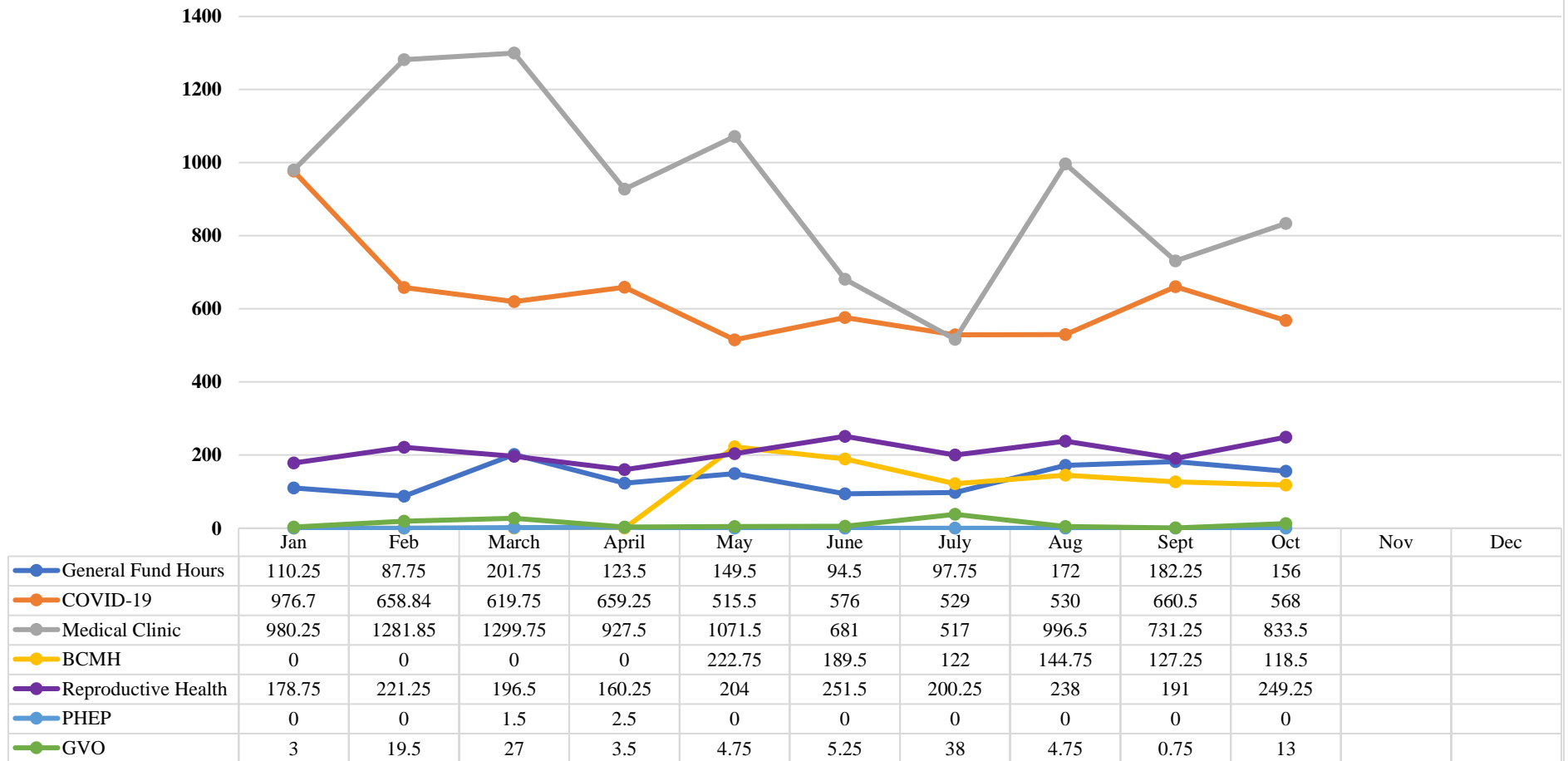
Immunizations	Month	YTD	Benchmark
Immunizations Administered (excluding COVID-19)	435	1,775	250 per month/ 3,000 annually

### Immunizations Administered



Month/Year: October 2022

## Community Health Services Staff Time

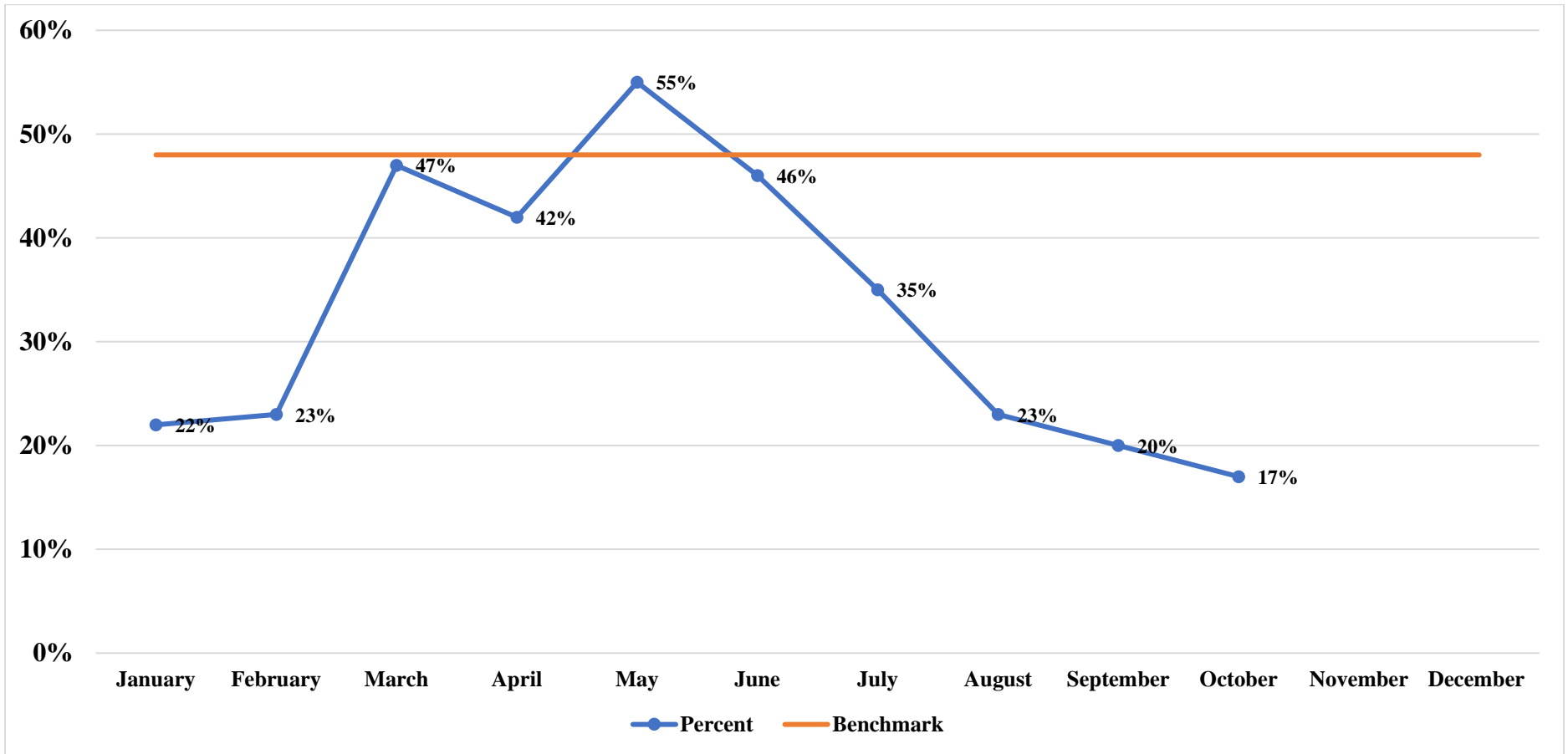


Month/Year: October 2022

## Maternal and Child Health Services

WIC Program	Month	YTD	Benchmark
Number of WIC infants aged 6-11 months that are still breastfed	17%	33%	48%

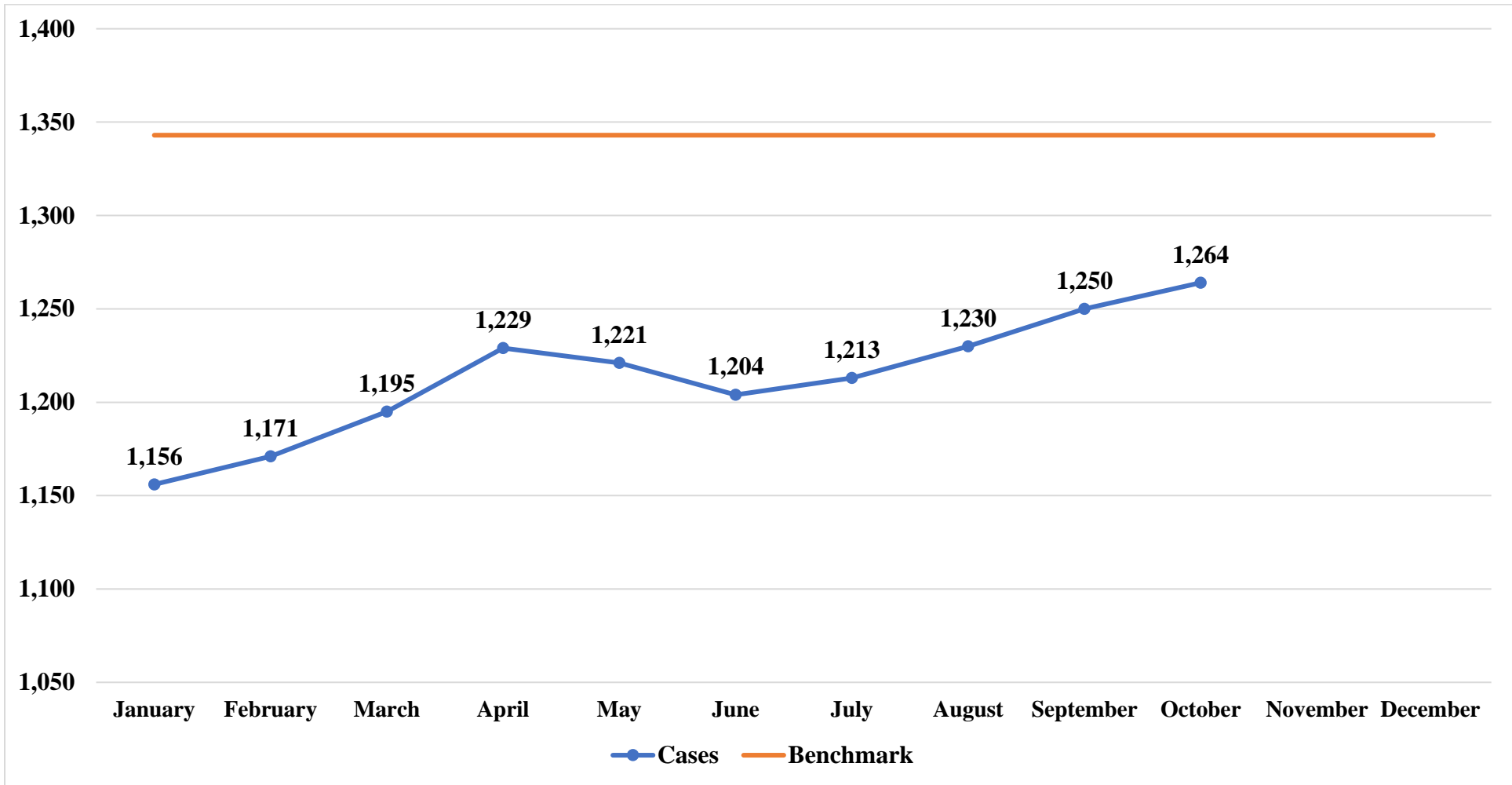
### Breastfed WIC Infants aged 6-11 months



Month/Year: October 2022

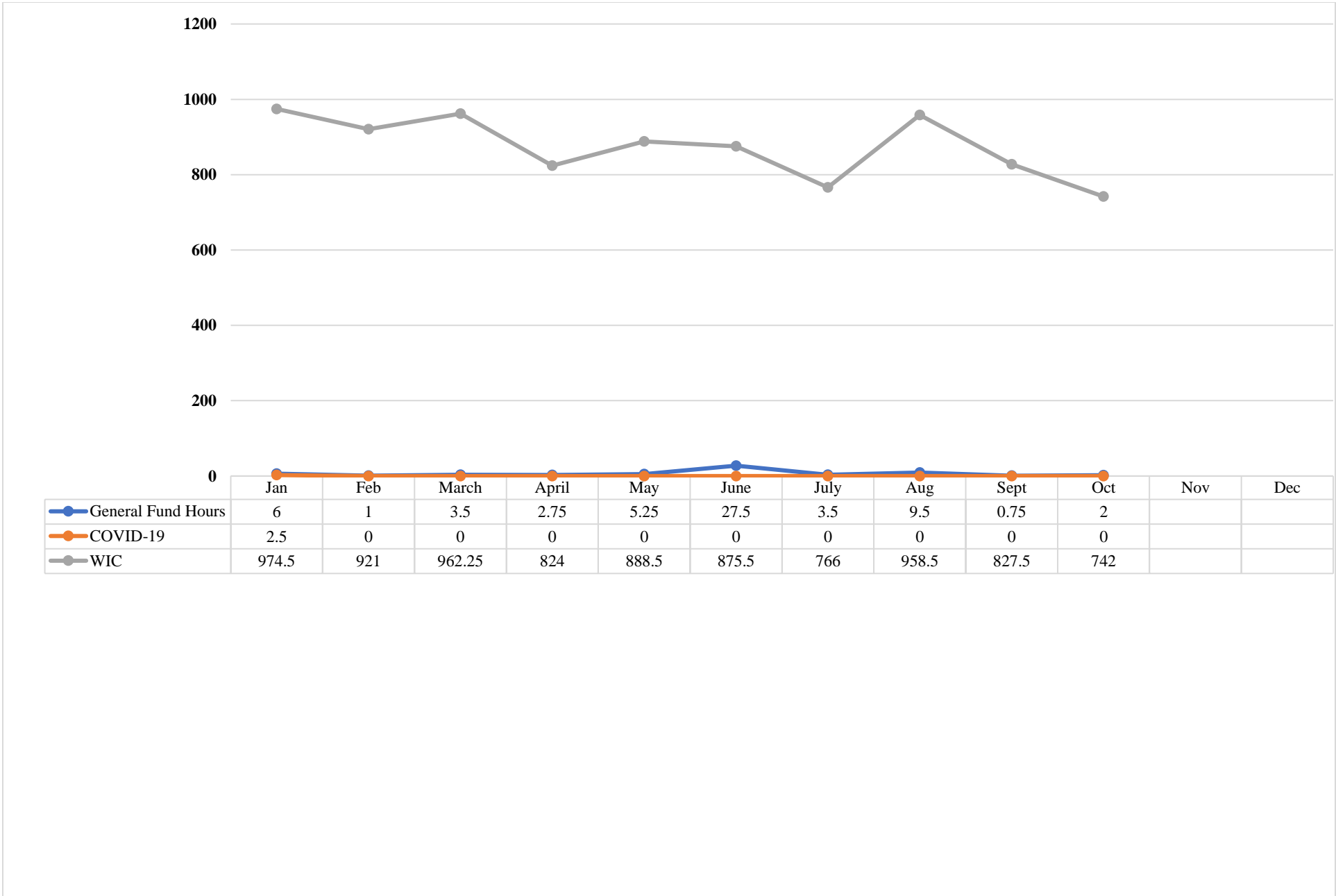
WIC Program	Month	YTD	Benchmark
WIC Caseload	1,250	1,213	1,343 monthly

### WIC Caseload



Month/Year: October 2022

# Maternal and Child Health Services Staff Time



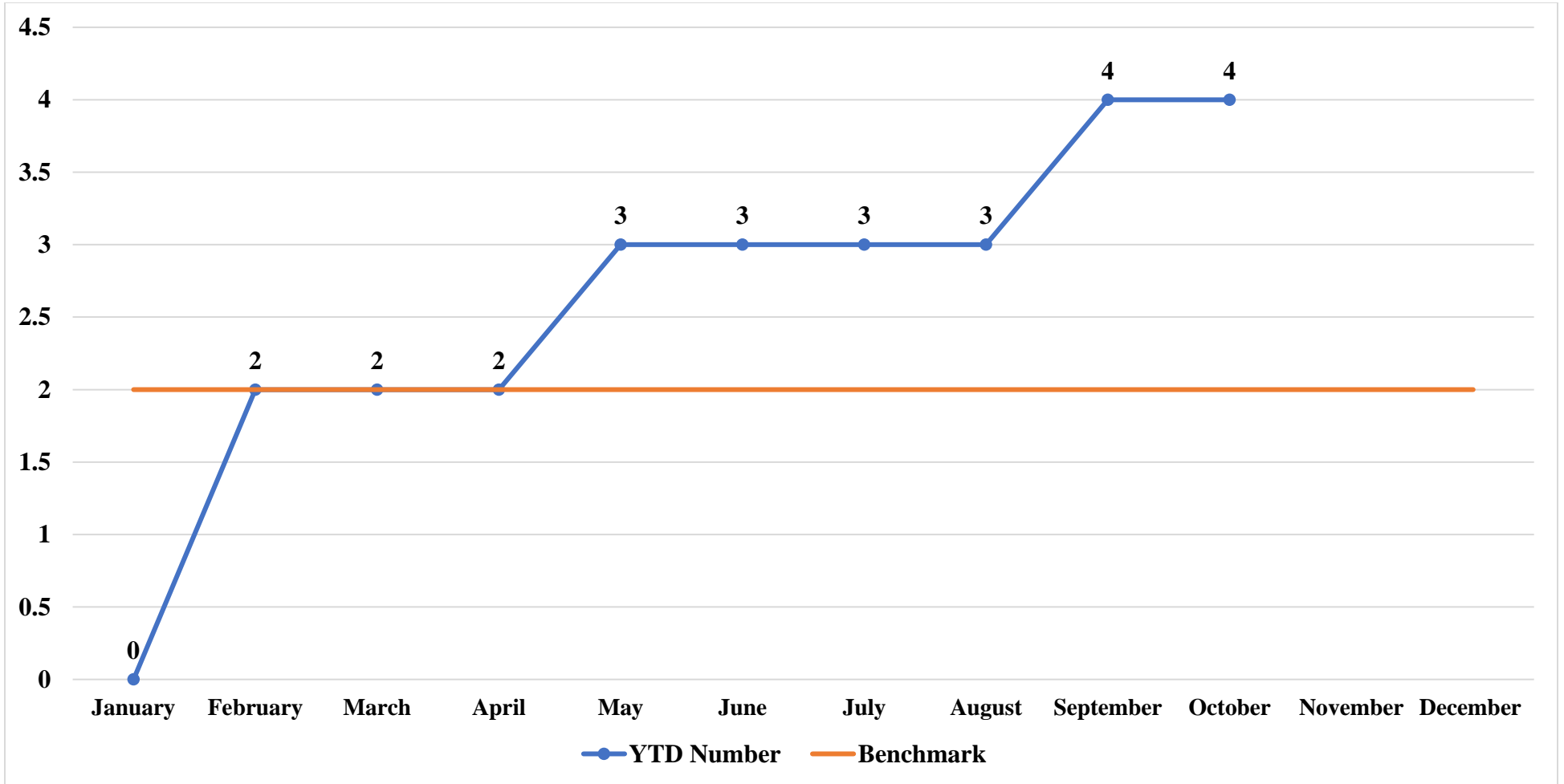
Month/Year: October 2022



## Prevention Services

Funding	Month	YTD	Benchmark
Number of New RFPs Completed	0	4	2 annually

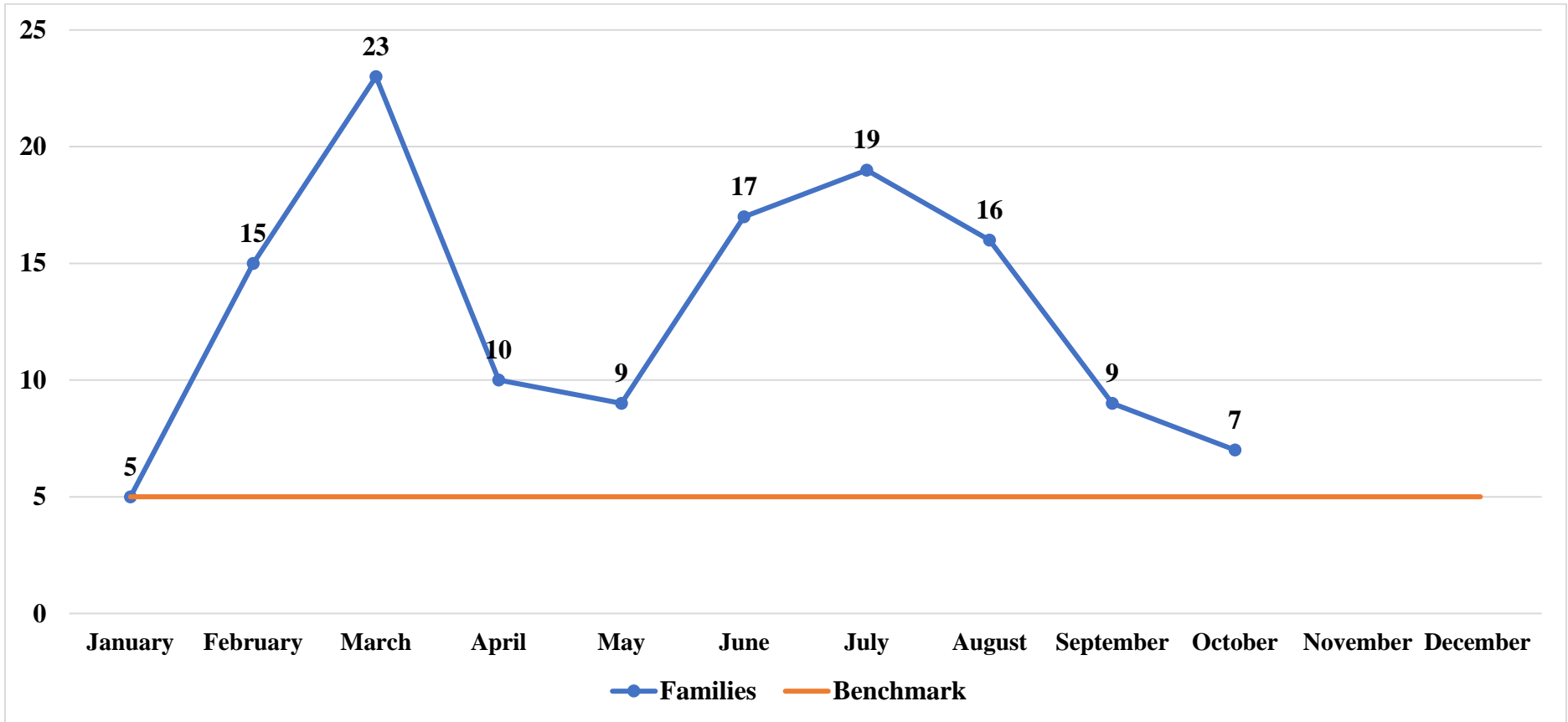
### New Proposals Completed



Month/Year: October 2022

Injury Prevention	Month	YTD	Benchmark
Number of Families Served	9	130	5 per month/ 60 annually

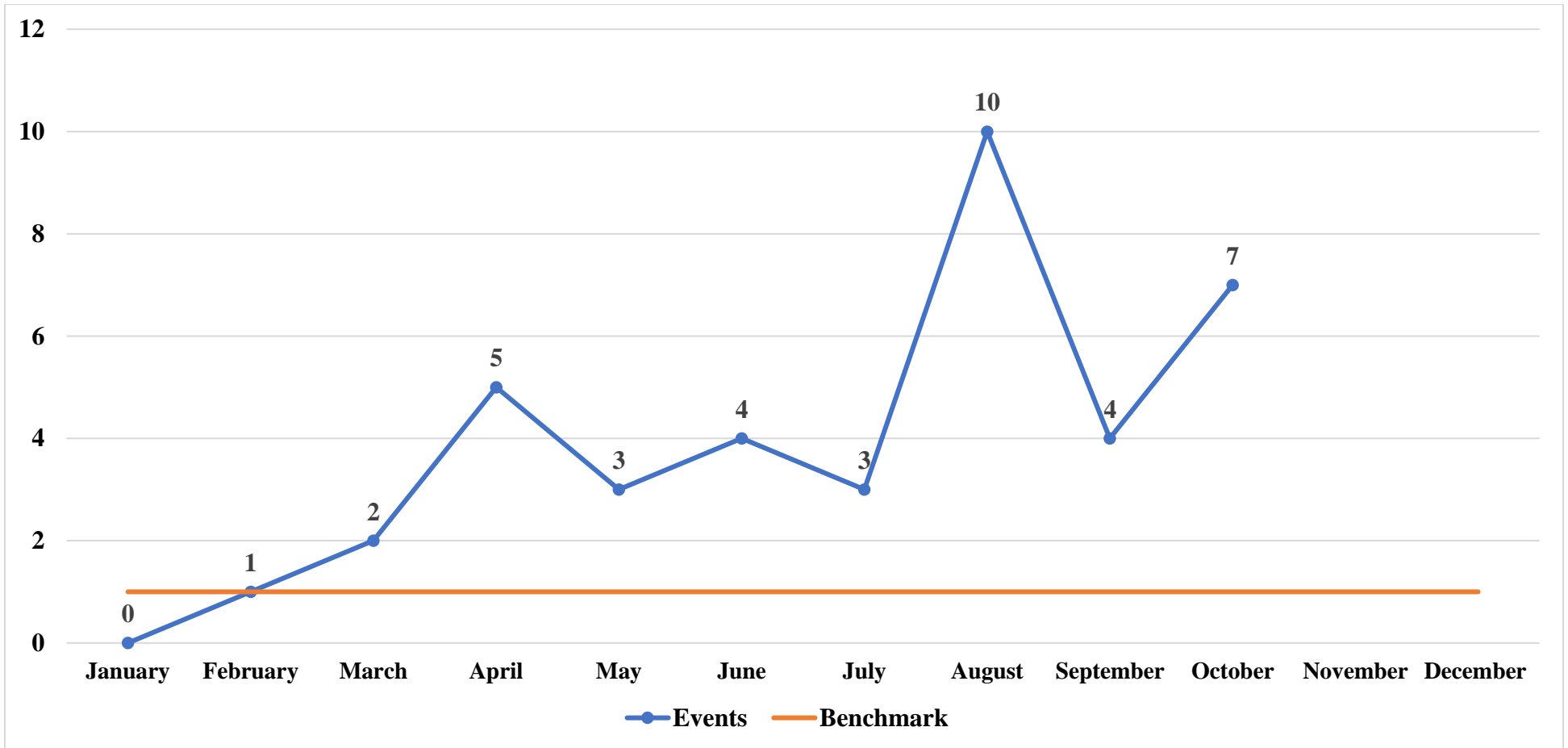
### Families Served



Month/Year: October 2022

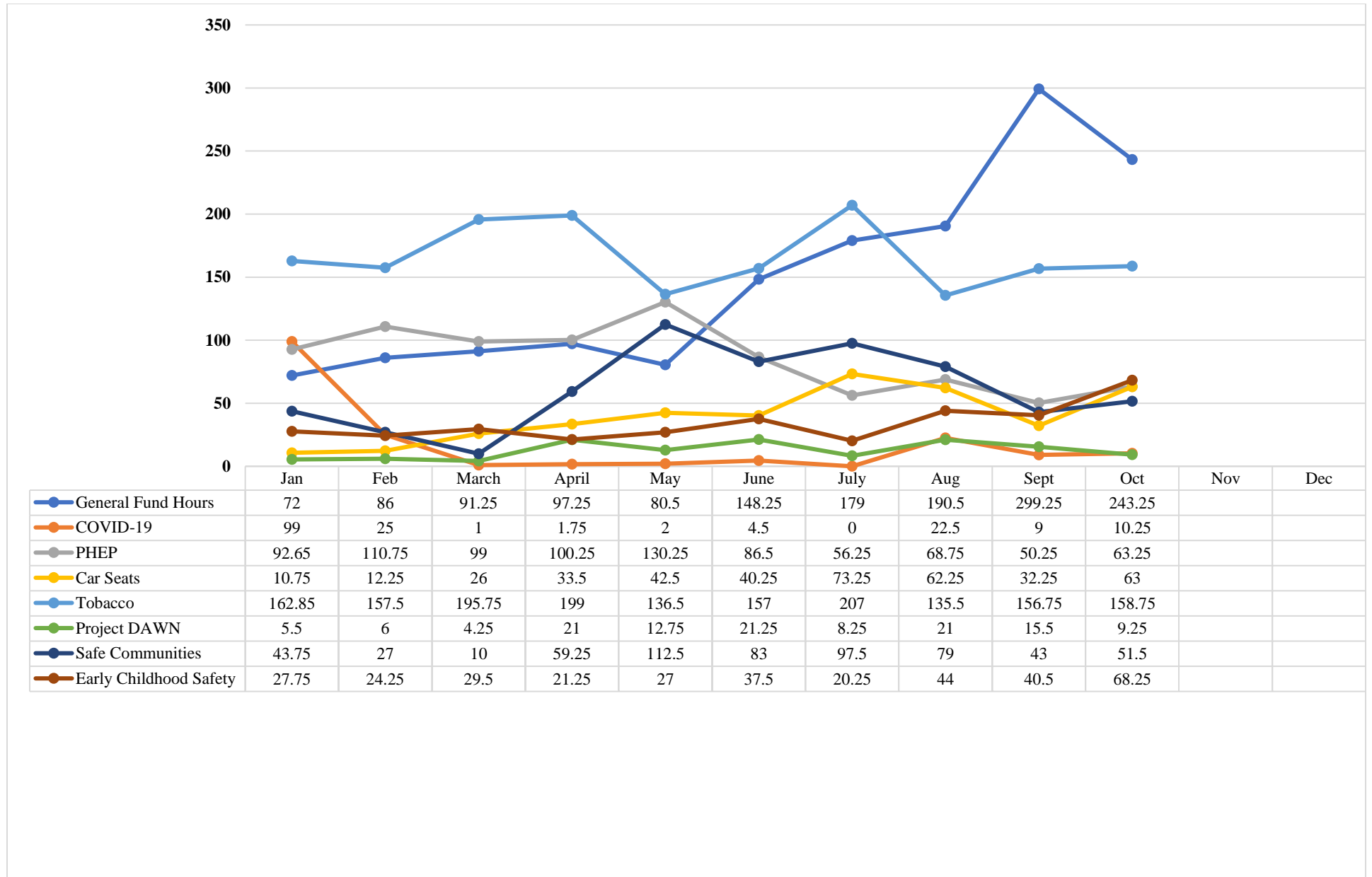
Community Engagement	Month	YTD	Benchmark
Participation at Community Events	7	39	1 per month/ 12 annually

### Community Events



Month/Year: October 2022

## Prevention Services Staff Time



Month/Year: October 2022