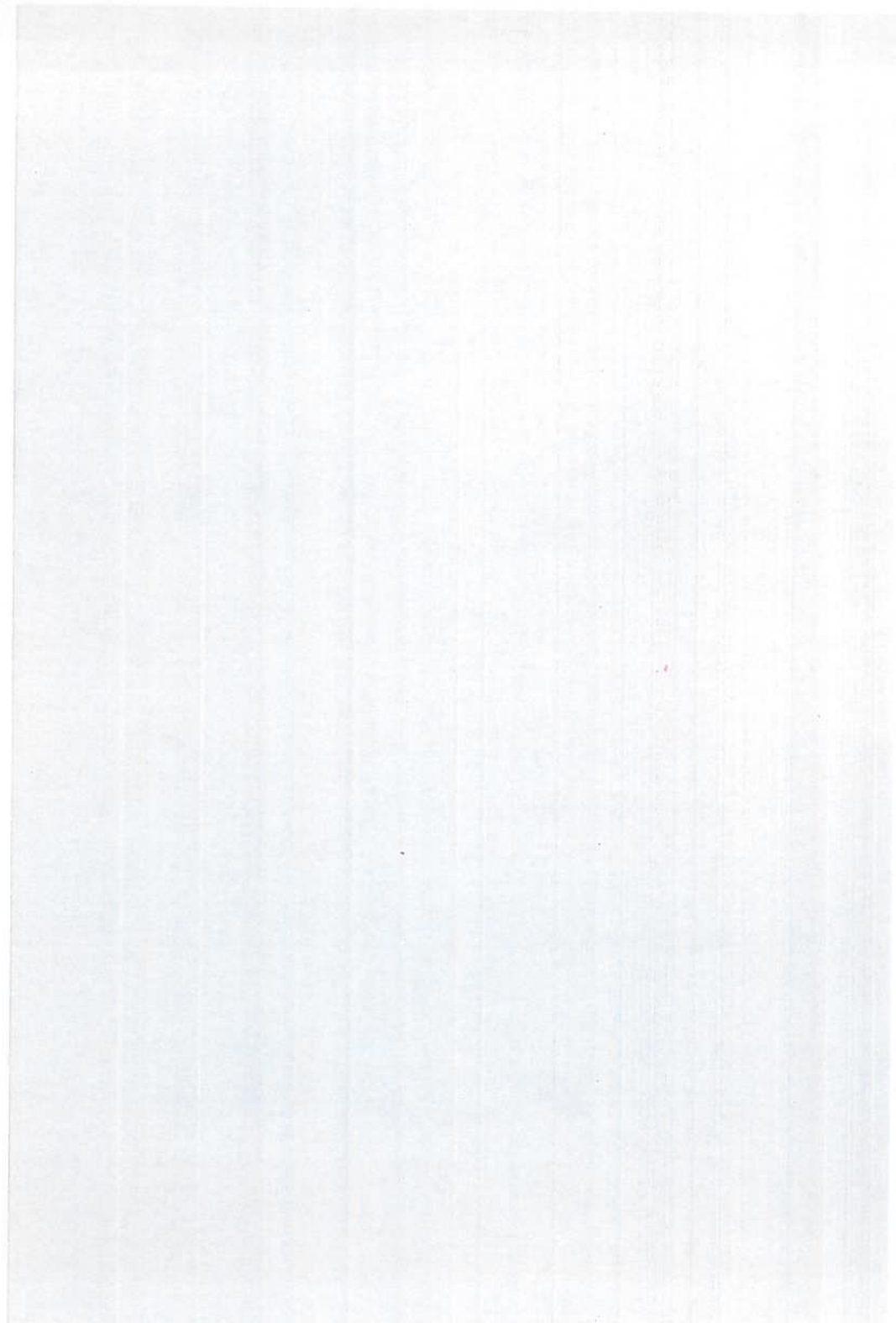
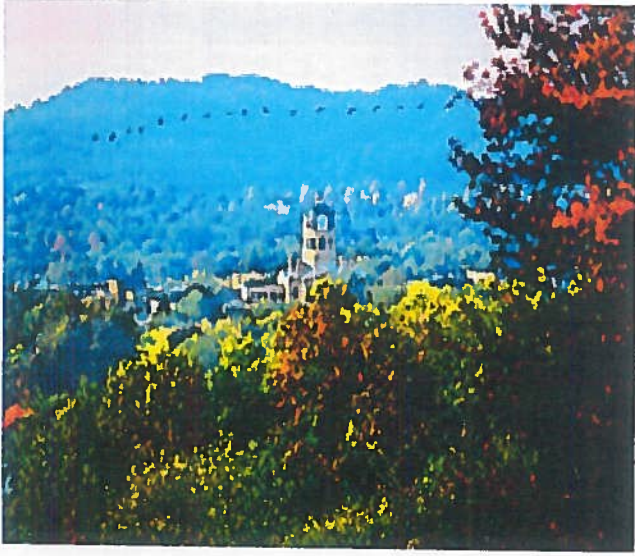


Tuscarawas County General Health District

Annual Report 2012



TUSCARAWAS COUNTY GENERAL HEALTH DISTRICT
BOARD OF HEALTH MEMBERS

Tweed Vorhees, President

Jeri M. Middaugh, Vice-President

Andrea L. Fanti, Ph.D., Ed. D.

Milan J. Packovich, M.D.

James O. Brick, D.V.M.

Michael A. Cochran

DISTRICT ADVISORY COUNCIL

John Miceli, Chairman

Don Ackerman, Vice-Chairman

Belle Everett, Secretary

ADMINISTRATION

William W. Harding
Interim Executive Director

James G. Hubert, DO, MS
Health Commissioner

Daniel S. Blumer, DO
Medical Director

Barbara Burns, RDN, LD,
WIC Director

Anthony J. Incarnato, MA, LPCC-S
Accounting Director

Myra R. Pancher, RS
Environmental Health Interim Director

Loretta Pinchek
Medical Records Director

Gary Spargrove
Maintenance Manager

Judy Tornabene, BSN, RN
Nursing Director

Larry Townsend, LICDC
Alcohol & Addiction Program Clinical Supervisor

2012 FINANCIAL REPORT

1/1/12 Beginning Balance All Funds \$4,139,052.85

RECEIPTS

Dental	\$ 93,839.30
Patient Pay & Donations	177,495.55
Title XIX Medicaid	369,540.37
Title XXIII Medicare	34,413.08
Grants	784,743.05
Contracts	434,233.93
Insurance	23,513.72
Environmental Health	139,494.53
TB Program	5,600.00
Vital Statistics	133,382.32
Other Receipts	5,220.29
Permits/Licenses/Evaluations	262,304.89
State Subsidy	14,108.98
Subdivisions/Capital Improvement	50,000.00
Settlements	1,028,352.33
Homestead & Rollbacks	241,519.82
Bookkeeping Adjustments & Transfers	280,706.47
Total Receipts 2012:	\$ 4,078,468.63

EXPENDITURES

Salaries	\$ 770,974.34
Supplies	210,446.54
Contracts	614,681.42
Travel	25,109.61
PERS	241,613.92
Workers' Compensation	35,344.69
Equipment	880.00
Remittance to EPA	32,565.01
Remittance to State	167,866.46
Bookkeeping Adjustments & Transfers	249,625.47
Medicare Insurance	22,731.00
Medical Insurance	295,545.70
Unemployment	5,895.59
Permanent Improvement	26,950.54
Other	26,115.00
Total Expenditures 2012:	\$ 3,726,345.29

ENVIRONMENTAL HEALTH

Inspections:

Water Samples	543
Water Supply Inspections	120
Chemical Water Samples	18
Housing	153
Nuisance	212
Rabies	343
Solid Waste	627
School	64
Camp	22
Insect	29
Rodent	22
Institution	1
Swimming Pools	46
Heads Tested	29
Heads Positive	0
Other	7
Meeting	51
Mosquito	3
Sewage Disposal Inspections	175
Food Service Operations	1,425
Vending	79

Evaluations:

New Site	142
Existing Water & Sewage	616
Total Consultations:	702

Total Licenses: 1,005

2012 VISITS

School Health Services Visits: 170

Alcohol & Addiction Program:
Total Sessions 917

Total Clients Served in Group 10,489
Total Assessments & Individuals 2,657
Prevention Activities 1,784

Breast Cervical Cancer Program (BCCP): 159

Special Clinic: Women's Health Day 204

Vital Statistics:
Births: 710
Deaths: 654
Birth Certificates Issued: 2,926
Death Certificates Issued: 2,481

Prenatal 517

Well Child 292

Dental Clinic 2,581

Nutrition/WIC 8,315

Family Practice 1,583

Family Planning 2,145

Bureau for Children
With Medical Handicaps (BCMh) 198

Walk-In Services:

TB Tests 589

Pregnancy Tests 789

B/P Checks 4,735

Total Immunizations (Child & Adult): 3,376

Flu Vaccine 1,644

Pneumonia Vaccine 24

Shingles 49

Rabies 18

Specialty Clinics:

Orthopedic 0

Neurology 25

Hearing 0

Tuscarawas County General Health District

897 East Iron Avenue
Dover, Ohio 44622-2030

Phone: 330-343-5555
1-800-860-8302
Fax: 330-343-2601

www.tuschealth.com

Hours

Monday, Wednesday, Friday

8:00 a.m. - 4:00 p.m.

Tuesday, Thursday

8:00 a.m. - 8:00 p.m.